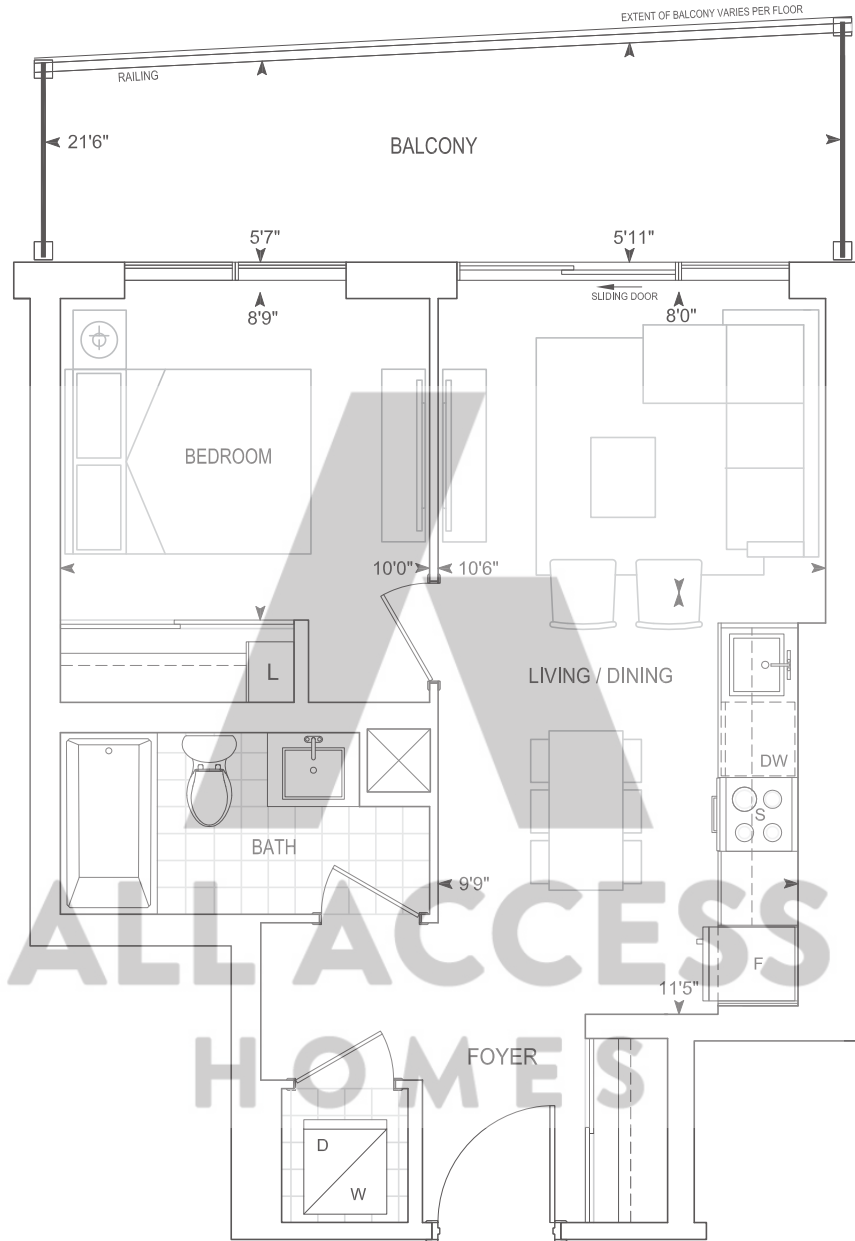


A514

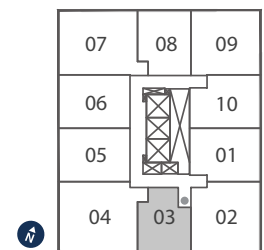
1 BEDROOM

Exterior 121 sq.ft. Interior 514 sq.ft. Total 635 sq.ft.



9' CEILINGS
FLOORS 5 - 10, 12, 14 - 21, 23 - 29

THOMPSON SERIES 10' CEILINGS
FLOORS 11, 22



FLOORS
5 - 12 & 14 - 29

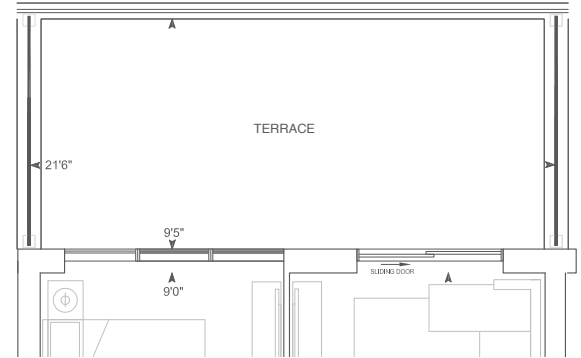
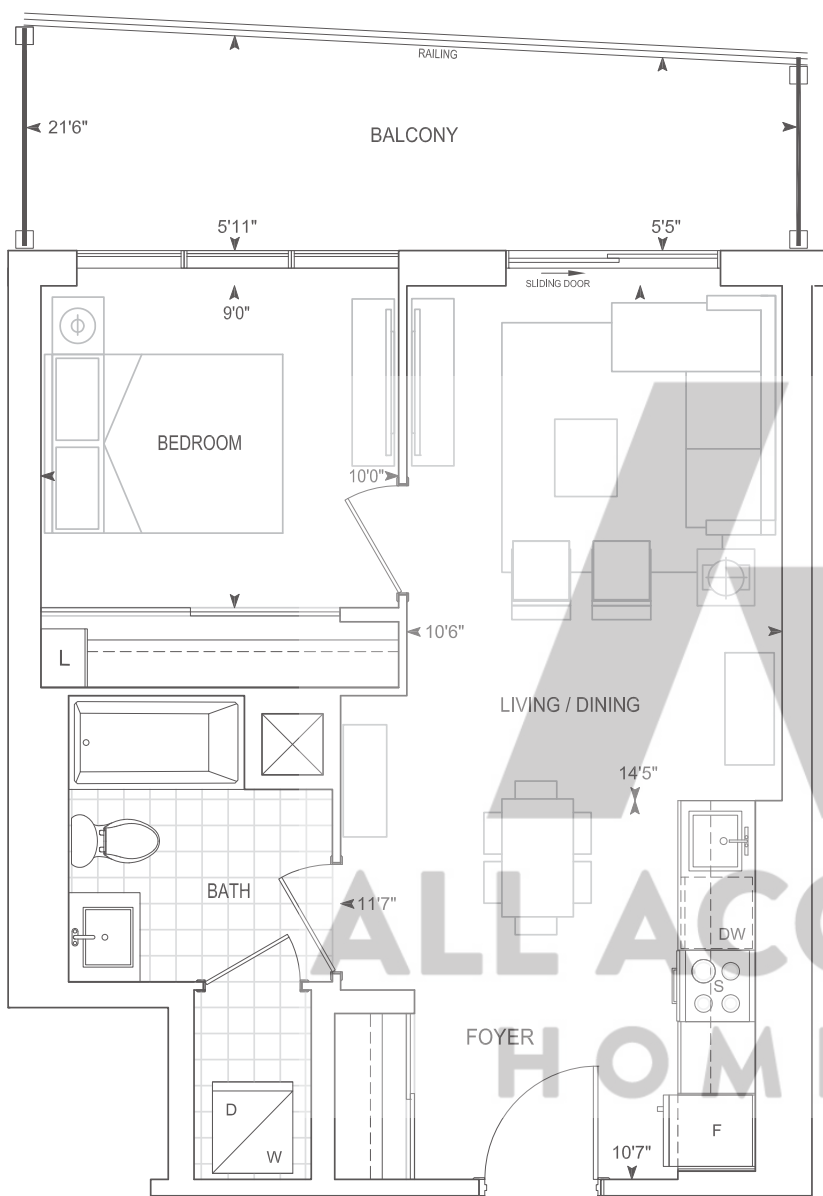
Dimensions, specifications, layouts, location of materials and fixtures, tile floor patterns and architectural detailing (including window size and location and door size, location and swing) are approximate only and are subject to change or modifications, without notice. Actual usable floor space varies from stated floor area. Orientation of suite may be reverse and Purchaser agrees to accept same. Balconies, terraces and patios are exclusive use common elements shown for display purposes only and location and size are subject to change without notice. All illustrations are artist concept only. The provisions of Schedule "X" of this Agreement, including Section 6 and 38 apply to this Schedule. E. & O.E. May 2023

Exterior 120 sq.ft. Interior 555 sq.ft. Total 675 sq.ft.
Terrace 207 sq.ft. Interior 555 sq.ft. Total 762 sq.ft.

A555-BF

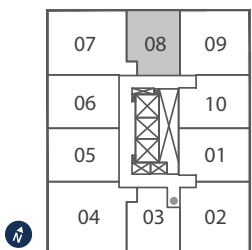
1 BEDROOM

Barrier Free



FLOOR 5

ALL ACCESS HOMES



**FLOORS 5 - 12,
14, 15 & 28**

9' CEILINGS
FLOORS 5 - 10, 12, 14-15, 28

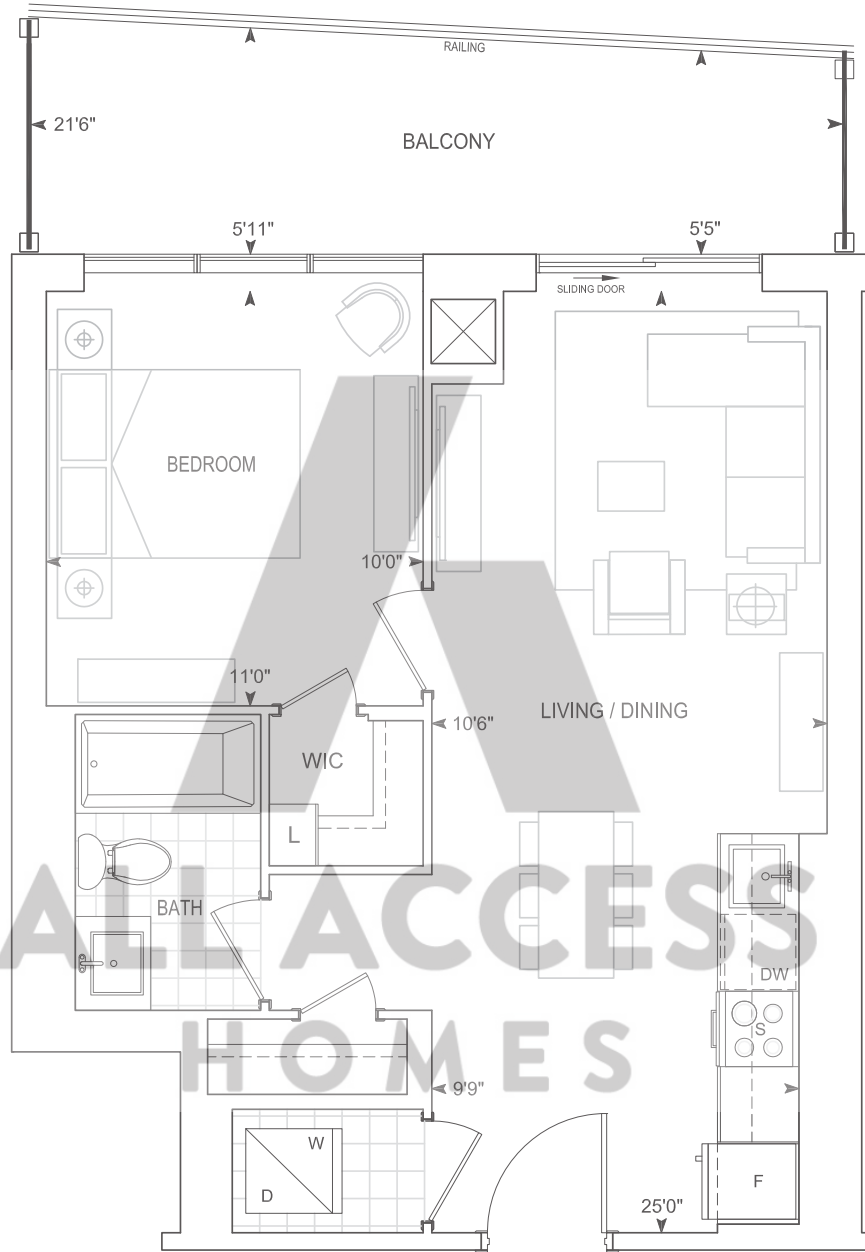
THOMPSON SERIES 10' CEILINGS
FLOOR 11

Dimensions, specifications, layouts, location of materials and fixtures, tile floor patterns and architectural detailing (including window size and location and door size, location and swing) are approximate only and are subject to change or modifications, without notice. Actual usable floor space varies from stated floor area. Orientation of suite may be reverse and Purchaser agrees to accept same. Balconies, terraces and patios are exclusive use common elements shown for display purposes only and location and size are subject to change without notice. All illustrations are artist concept only. The provisions of Schedule "X" of this Agreement, including Section 6 and 38 apply to this Schedule. E. & O.E. May 2023

A555

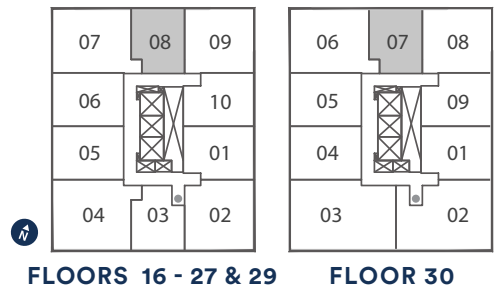
1 BEDROOM

Exterior 120 sq.ft. Interior 555 sq.ft. Total 675 sq.ft.



9' CEILINGS
FLOORS 16 - 21, 23 - 27, 29

THOMPSON SERIES 10' CEILINGS
FLOORS 22, 30



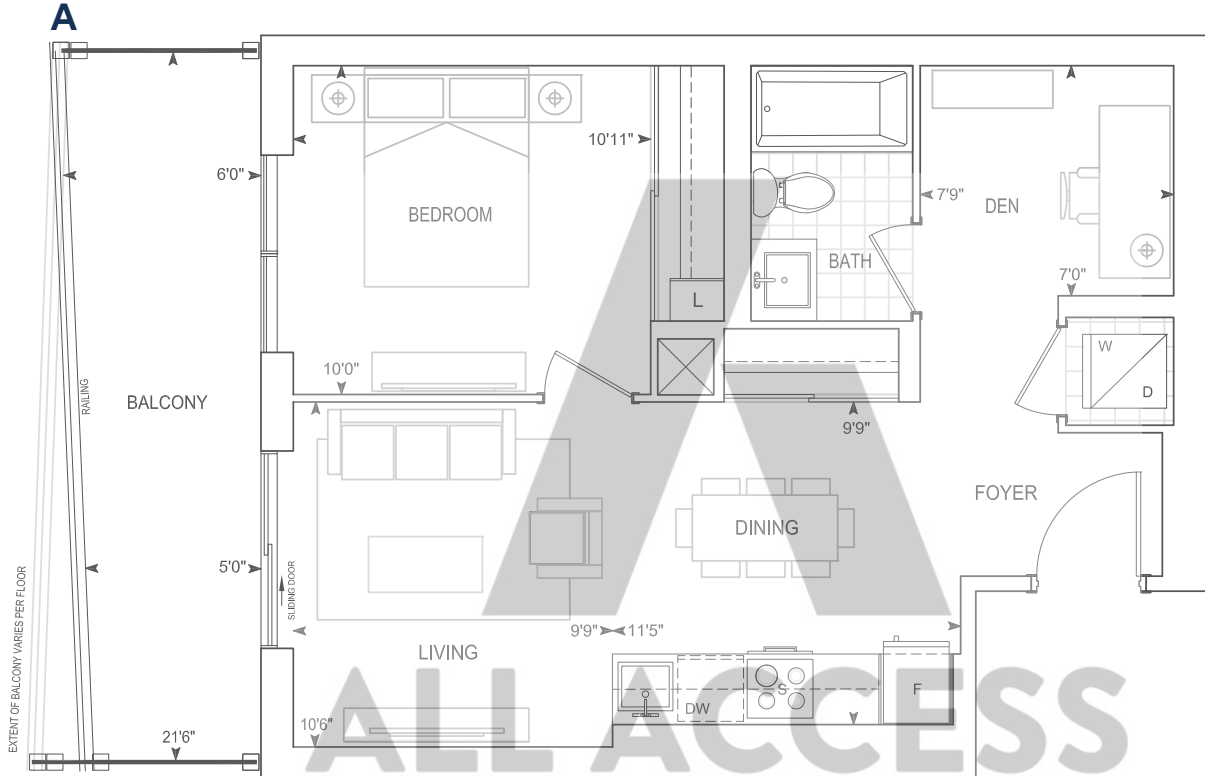
Dimensions, specifications, layouts, location of materials and fixtures, tile floor patterns and architectural detailing (including window size and location and door size, location and swing) are approximate only and are subject to change or modifications, without notice. Actual usable floor space varies from stated floor area. Orientation of suite may be reverse and Purchaser agrees to accept same. Balconies, terraces and patios are exclusive use common elements shown for display purposes only and location and size are subject to change without notice. All illustrations are artist concept only. The provisions of Schedule "X" of this Agreement, including Section 6 and 38 apply to this Schedule. E. & O.E. May 2023

Exterior A 110 sq.ft. **Interior** 595 sq.ft. **Total** 705 sq.ft.
Exterior B 132 sq.ft. **Interior** 595 sq.ft. **Total** 727 sq.ft.

B595

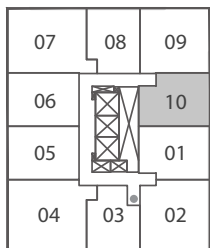
1 BEDROOM + DEN

Ext. A Floors: 5-9, 15-18, 23-25, 29, 30

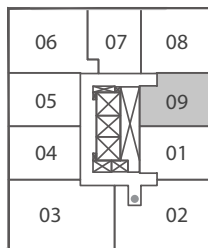


Ext. B Floors: 10-12, 14, 19-22, 26-28

ALL ACCESS
HOMES



FLOORS
5 - 12 & 14 - 29



FLOOR 30

9' CEILINGS

FLOORS 5 - 10, 12, 14 - 21, 23 - 29

THOMPSON SERIES 10' CEILINGS

FLOORS 11, 22, 30

Dimensions, specifications, layouts, location of materials and fixtures, tile floor patterns and architectural detailing (including window size and location and door size, location and swing) are approximate only and are subject to change or modifications, without notice. Actual usable floor space varies from stated floor area. Orientation of suite may be reverse and Purchaser agrees to accept same. Balconies, terraces and patios are exclusive use common elements shown for display purposes only and location and size are subject to change without notice. All illustrations are artist concept only. The provisions of Schedule "X" of this Agreement, including Section 6 and 38 apply to this Schedule. E. & O.E. May 2023

B614

1 BEDROOM + DEN

Exterior A 112 sq.ft. Interior 614 sq.ft. Total 726 sq.ft.
 Exterior B 130 sq.ft. Interior 614 sq.ft. Total 744 sq.ft.

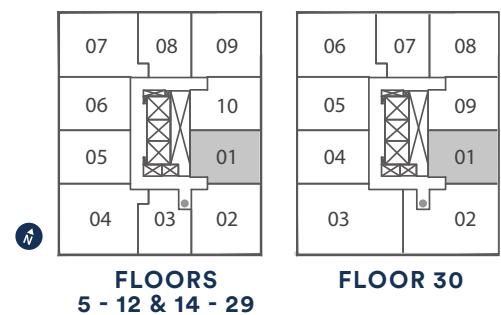
Ext. A Floors: 10-12, 14, 19-22, 26-28



Ext. B Floors: 5-9, 15-18, 23-25, 29, 30

9' CEILINGS
 FLOORS 5 - 10, 12, 14 - 21, 23 - 29

THOMPSON SERIES 10' CEILINGS
 FLOORS 11, 22, 30



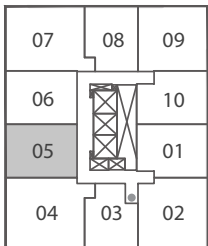
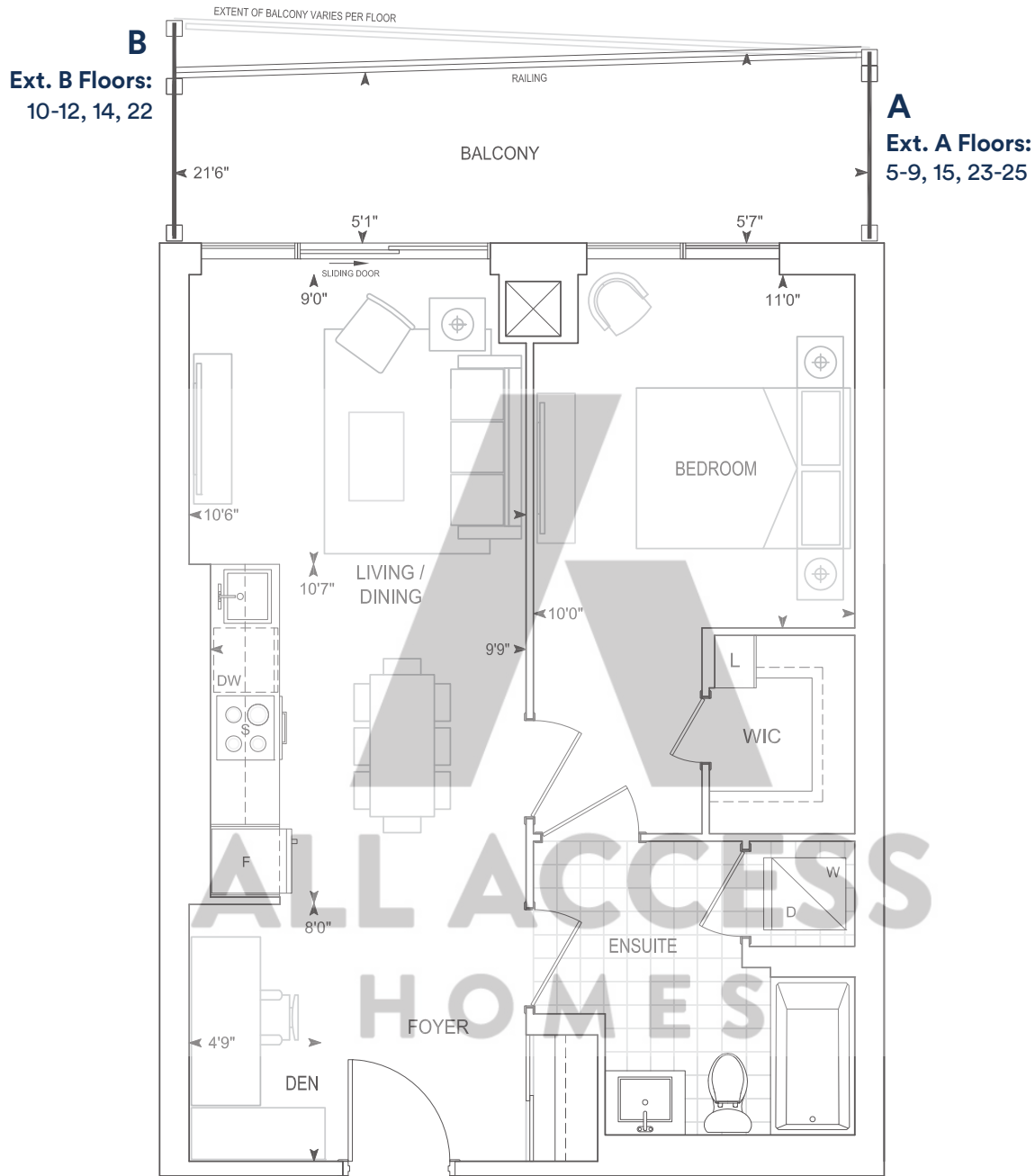
Dimensions, specifications, layouts, location of materials and fixtures, tile floor patterns and architectural detailing (including window size and location and door size, location and swing) are approximate only and are subject to change or modifications, without notice. Actual usable floor space varies from stated floor area. Orientation of suite may be reverse and Purchaser agrees to accept same. Balconies, terraces and patios are exclusive use common elements shown for display purposes only and location and size are subject to change without notice. All illustrations are artist concept only. The provisions of Schedule "X" of this Agreement, including Section 6 and 38 apply to this Schedule. E. & O.E. May 2023

Exterior A 110 sq.ft. **Interior** 637 sq.ft. **Total** 747 sq.ft.
Exterior B 129 sq.ft. **Interior** 637 sq.ft. **Total** 766 sq.ft.

B637-BF

1 BEDROOM + DEN

Barrier Free



**FLOORS 5 - 12,
 14 - 15 & 22 - 25**

9' CEILINGS
FLOORS 5 - 10, 12, 14 - 15, 23 - 25

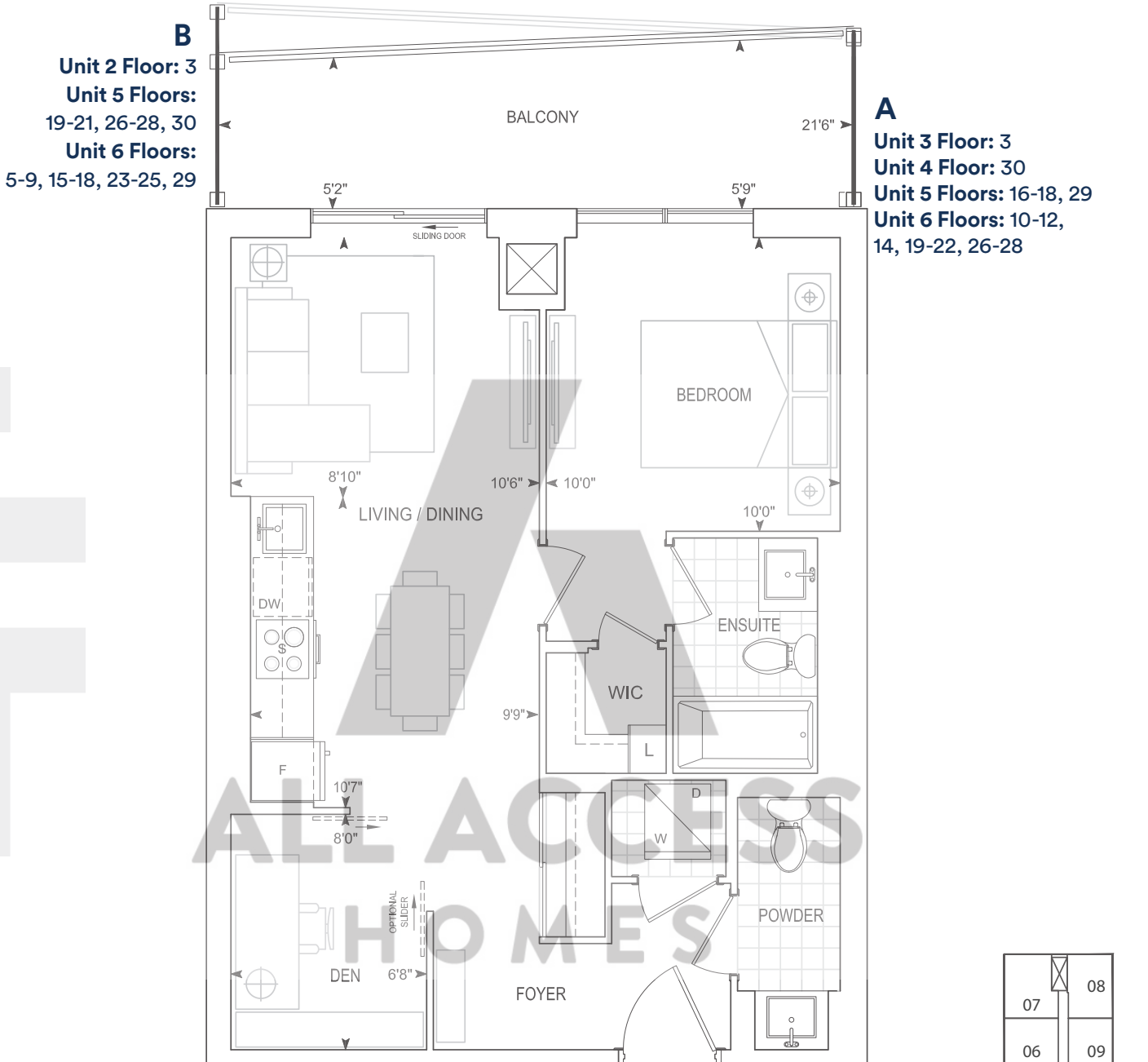
THOMPSON SERIES 10' CEILINGS
FLOORS 11, 22

Dimensions, specifications, layouts, location of materials and fixtures, tile floor patterns and architectural detailing (including window size and location and door size, location and swing) are approximate only and are subject to change or modifications, without notice. Actual usable floor space varies from stated floor area. Orientation of suite may be reverse and Purchaser agrees to accept same. Balconies, terraces and patios are exclusive use common elements shown for display purposes only and location and size are subject to change without notice. All illustrations are artist concept only. The provisions of Schedule "X" of this Agreement, including Section 6 and 38 apply to this Schedule. E. & O.E. May 2023

B637

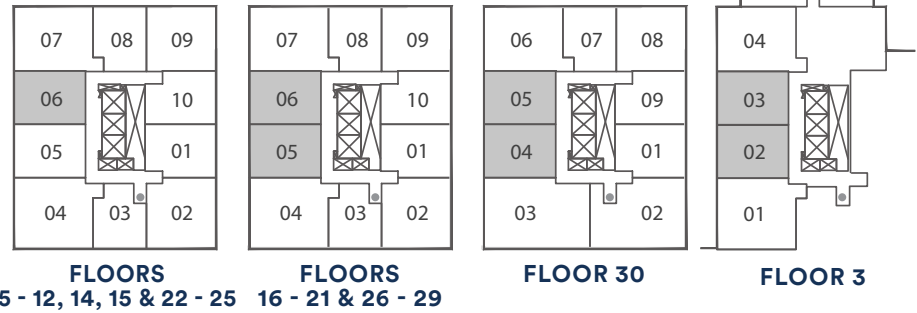
1 BEDROOM + DEN

Exterior A 110 sq.ft. Interior 637 sq.ft. Total 747 sq.ft.
Exterior B 129 sq.ft. Interior 637 sq.ft. Total 766 sq.ft.



9' CEILINGS
FLOORS 3, 5 - 10, 12, 14 - 21, 23 - 29

THOMPSON SERIES 10' CEILINGS
FLOORS 11, 22, 30

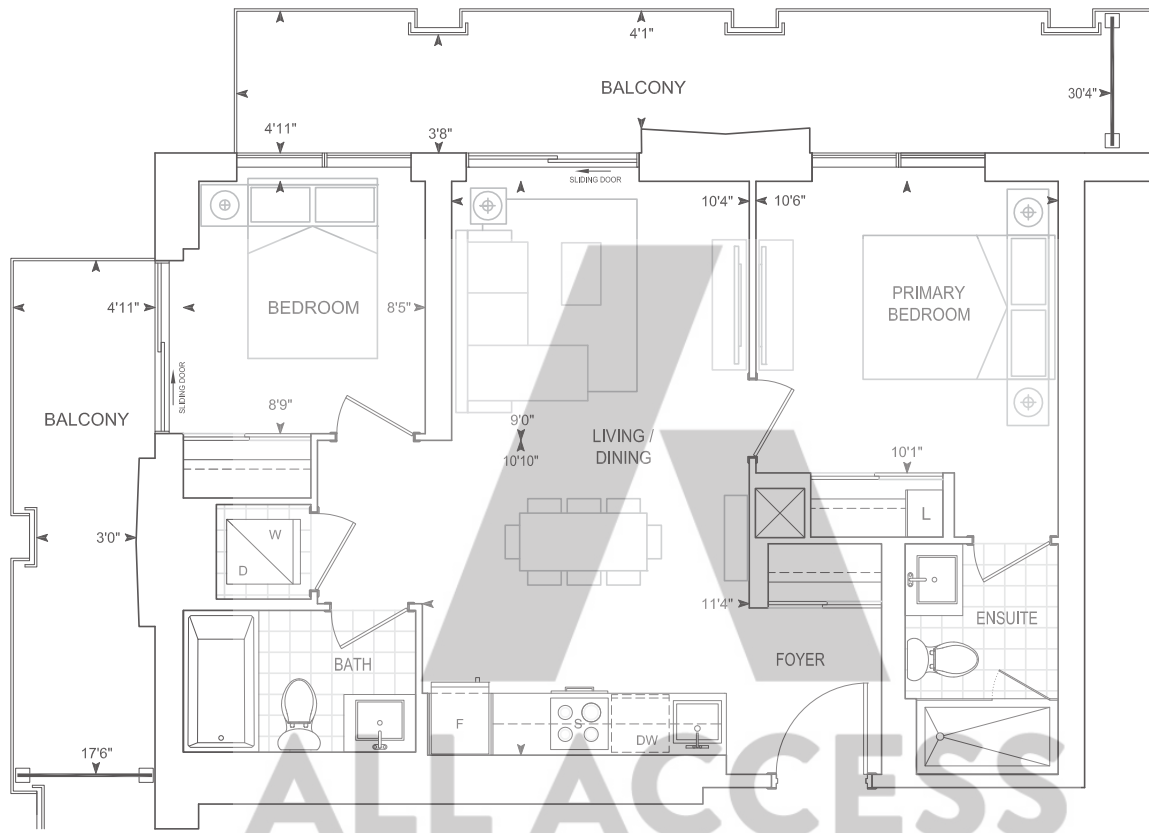


Dimensions, specifications, layouts, location of materials and fixtures, tile floor patterns and architectural detailing (including window size and location and door size, location and swing) are approximate only and are subject to change or modifications, without notice. Actual usable floor space varies from stated floor area. Orientation of suite may be reverse and Purchaser agrees to accept same. Balconies, terraces and patios are exclusive use common elements shown for display purposes only and location and size are subject to change without notice. All illustrations are artist concept only. The provisions of Schedule "X" of this Agreement, including Section 6 and 38 apply to this Schedule. E. & O.E. May 2023

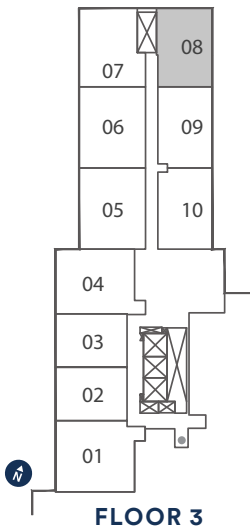
Exterior 212 sq.ft. Interior 722 sq.ft. Total 934 sq.ft.

C722

2 BEDROOM



ALL ACCESS
HOMES



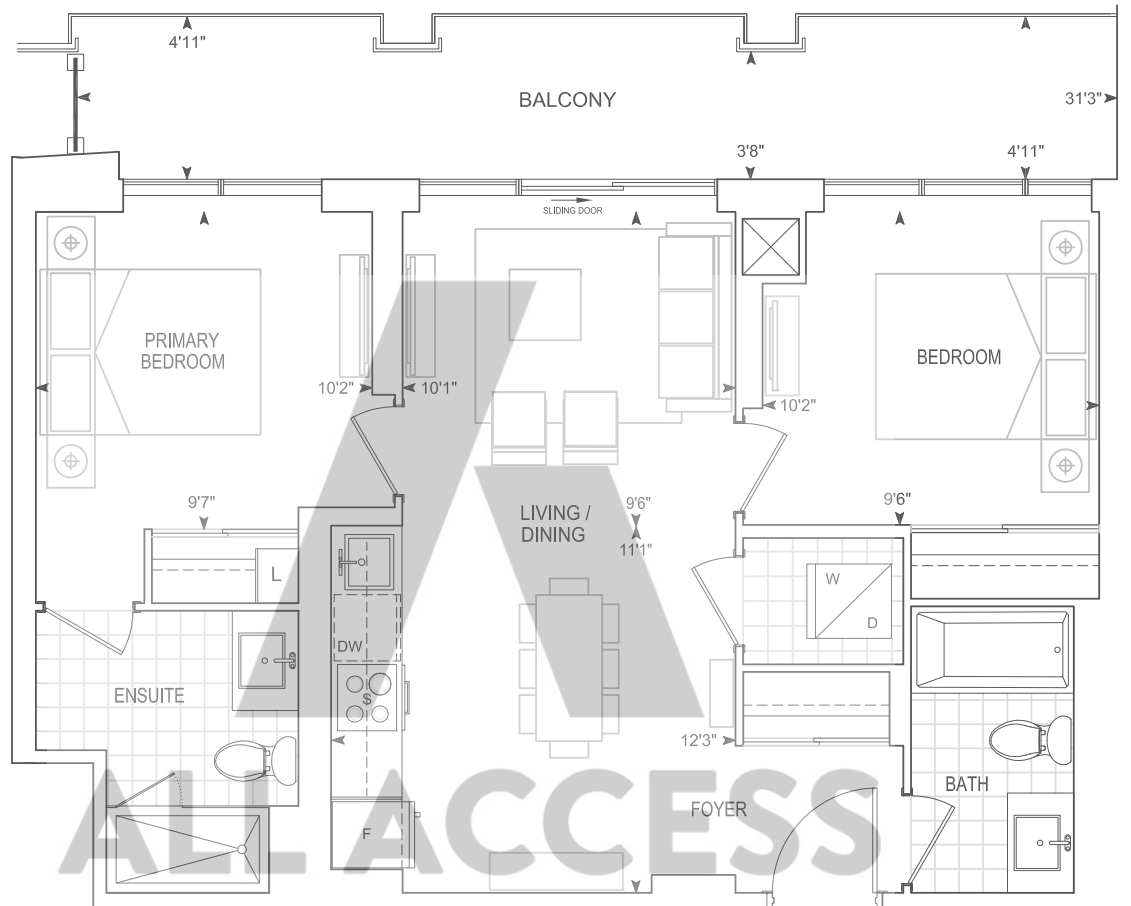
**9' CEILINGS
FLOOR 3**

Dimensions, specifications, layouts, location of materials and fixtures, tile floor patterns and architectural detailing (including window size and location and door size, location and swing) are approximate only and are subject to change or modifications, without notice. Actual usable floor space varies from stated floor area. Orientation of suite may be reverse and Purchaser agrees to accept same. Balconies, terraces and patios are exclusive use common elements shown for display purposes only and location and size are subject to change without notice. All illustrations are artist concept only. The provisions of Schedule "X" of this Agreement, including Section 6 and 38 apply to this Schedule. E. & O.E. May 2023

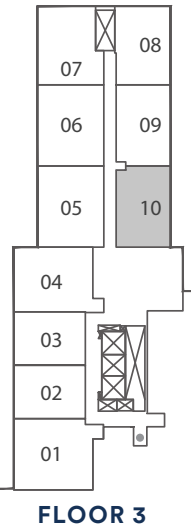
C735

2 BEDROOM

Exterior 144 sq.ft. Interior 735 sq.ft. Total 879 sq.ft.



ALL ACCESS HOMES



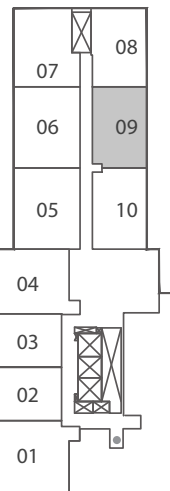
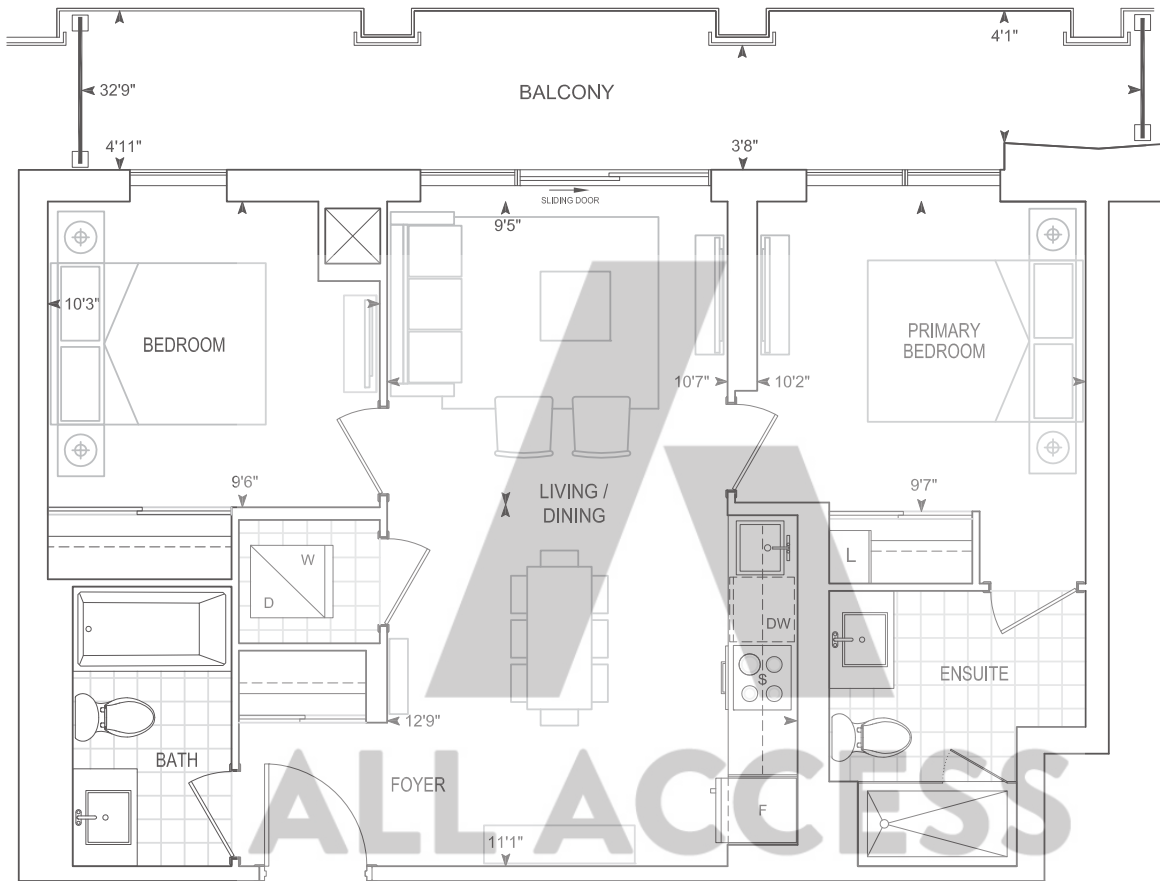
9' CEILINGS
FLOOR 3

Dimensions, specifications, layouts, location of materials and fixtures, tile floor patterns and architectural detailing (including window size and location and door size, location and swing) are approximate only and are subject to change or modifications, without notice. Actual usable floor space varies from stated floor area. Orientation of suite may be reverse and Purchaser agrees to accept same. Balconies, terraces and patios are exclusive use common elements shown for display purposes only and location and size are subject to change without notice. All illustrations are artist concept only. The provisions of Schedule "X" of this Agreement, including Section 6 and 38 apply to this Schedule. E. & O.E. May 2023

Exterior 147 sq.ft. Interior 736 sq.ft. Total 883 sq.ft.

C736

2 BEDROOM



FLOOR 3

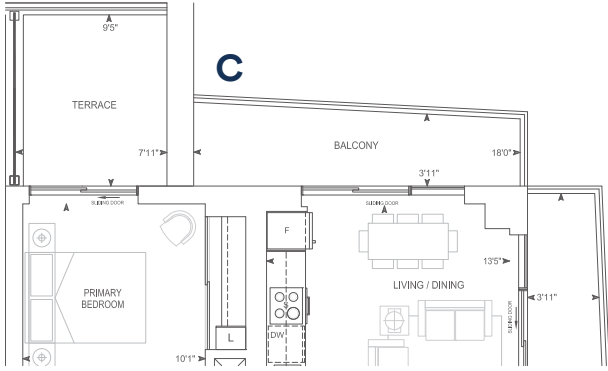
9' CEILINGS
FLOOR 3

Dimensions, specifications, layouts, location of materials and fixtures, tile floor patterns and architectural detailing (including window size and location and door size, location and swing) are approximate only and are subject to change or modifications, without notice. Actual usable floor space varies from stated floor area. Orientation of suite may be reverse and Purchaser agrees to accept same. Balconies, terraces and patios are exclusive use common elements shown for display purposes only and location and size are subject to change without notice. All illustrations are artist concept only. The provisions of Schedule "X" of this Agreement, including Section 6 and 38 apply to this Schedule. E. & O.E. May 2023

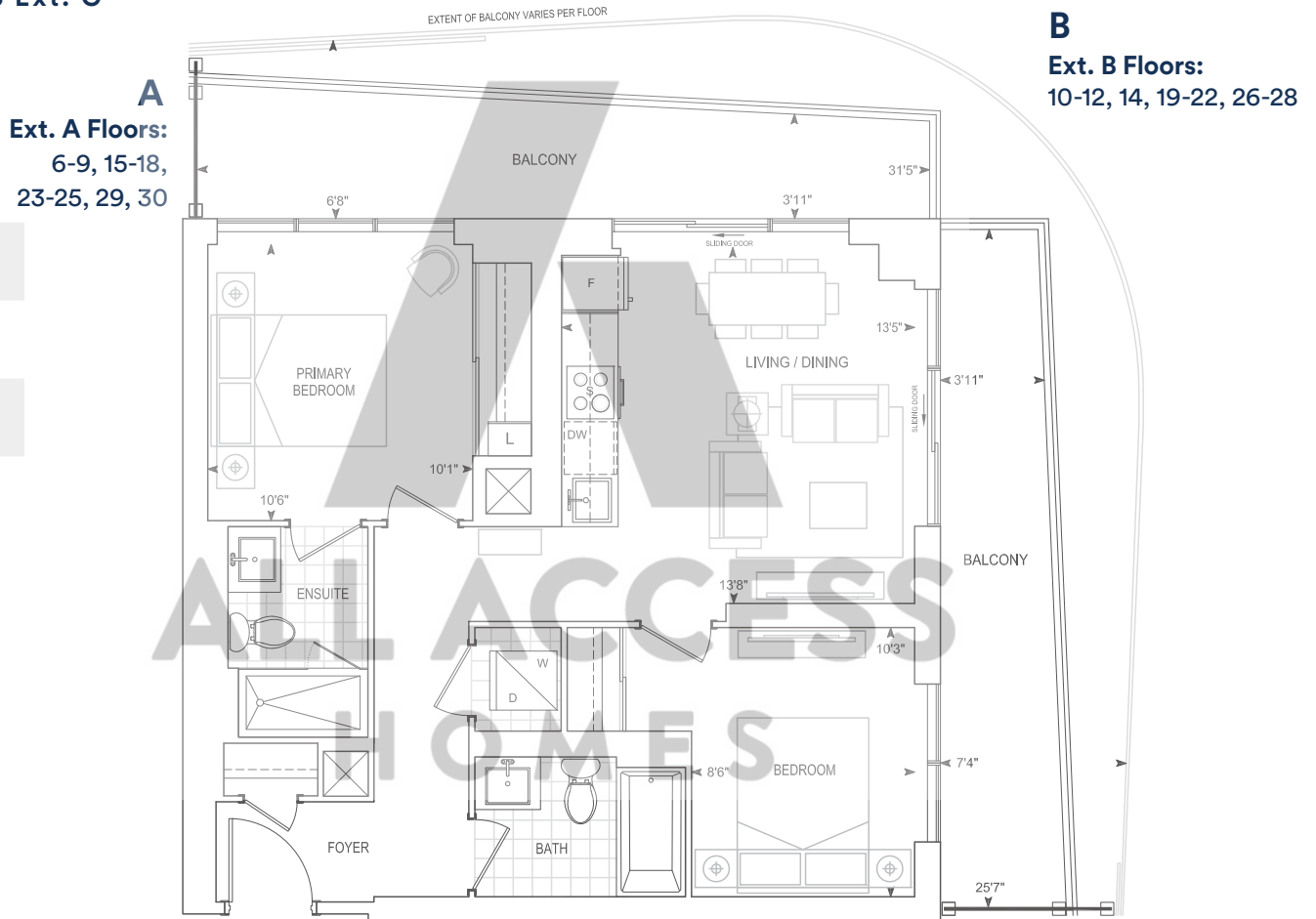
C756

2 BEDROOM

Exterior A 227 sq.ft. Interior 756 sq.ft. Total 983 sq.ft.
 Exterior B 421 sq.ft. Interior 756 sq.ft. Total 1,177 sq.ft.
 Exterior C 258 sq.ft. Interior 756 sq.ft. Total 1,014 sq.ft.



FLOOR 5 Ext. C

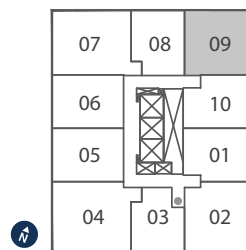


A
 Ext. A Floors:
 6-9, 15-18,
 23-25, 29, 30

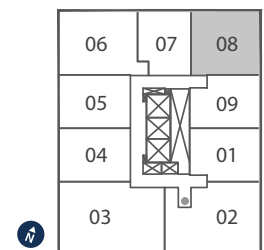
B
 Ext. B Floors:
 10-12, 14, 19-22, 26-28

9' CEILINGS
 FLOORS 5 - 10, 12, 14 - 21, 23 - 29

THOMPSON SERIES 10' CEILINGS
 FLOORS 11, 22, 30



FLOORS
 5 - 12 & 14 - 29



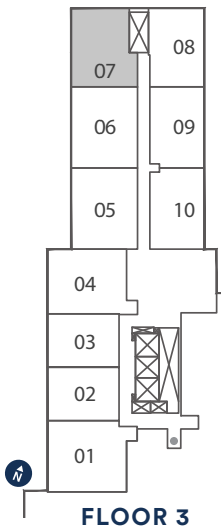
FLOOR 30

Dimensions, specifications, layouts, location of materials and fixtures, tile floor patterns and architectural detailing (including window size and location and door size, location and swing) are approximate only and are subject to change or modifications, without notice. Actual usable floor space varies from stated floor area. Orientation of suite may be reverse and Purchaser agrees to accept same. Balconies, terraces and patios are exclusive use common elements shown for display purposes only and location and size are subject to change without notice. All illustrations are artist concept only. The provisions of Schedule "X" of this Agreement, including Section 6 and 38 apply to this Schedule. E. & O.E. May 2023

Exterior 262 sq.ft. Interior 808 sq.ft. Total 1,070 sq.ft.

C808

2 BEDROOM



FLOOR 3

9' CEILINGS
FLOOR 3

Dimensions, specifications, layouts, location of materials and fixtures, tile floor patterns and architectural detailing (including window size and location and door size, location and swing) are approximate only and are subject to change or modifications, without notice. Actual usable floor space varies from stated floor area. Orientation of suite may be reverse and Purchaser agrees to accept same. Balconies, terraces and patios are exclusive use common elements shown for display purposes only and location and size are subject to change without notice. All illustrations are artist concept only. The provisions of Schedule "X" of this Agreement, including Section 6 and 38 apply to this Schedule. E. & O.E. May 2023

C812-BF

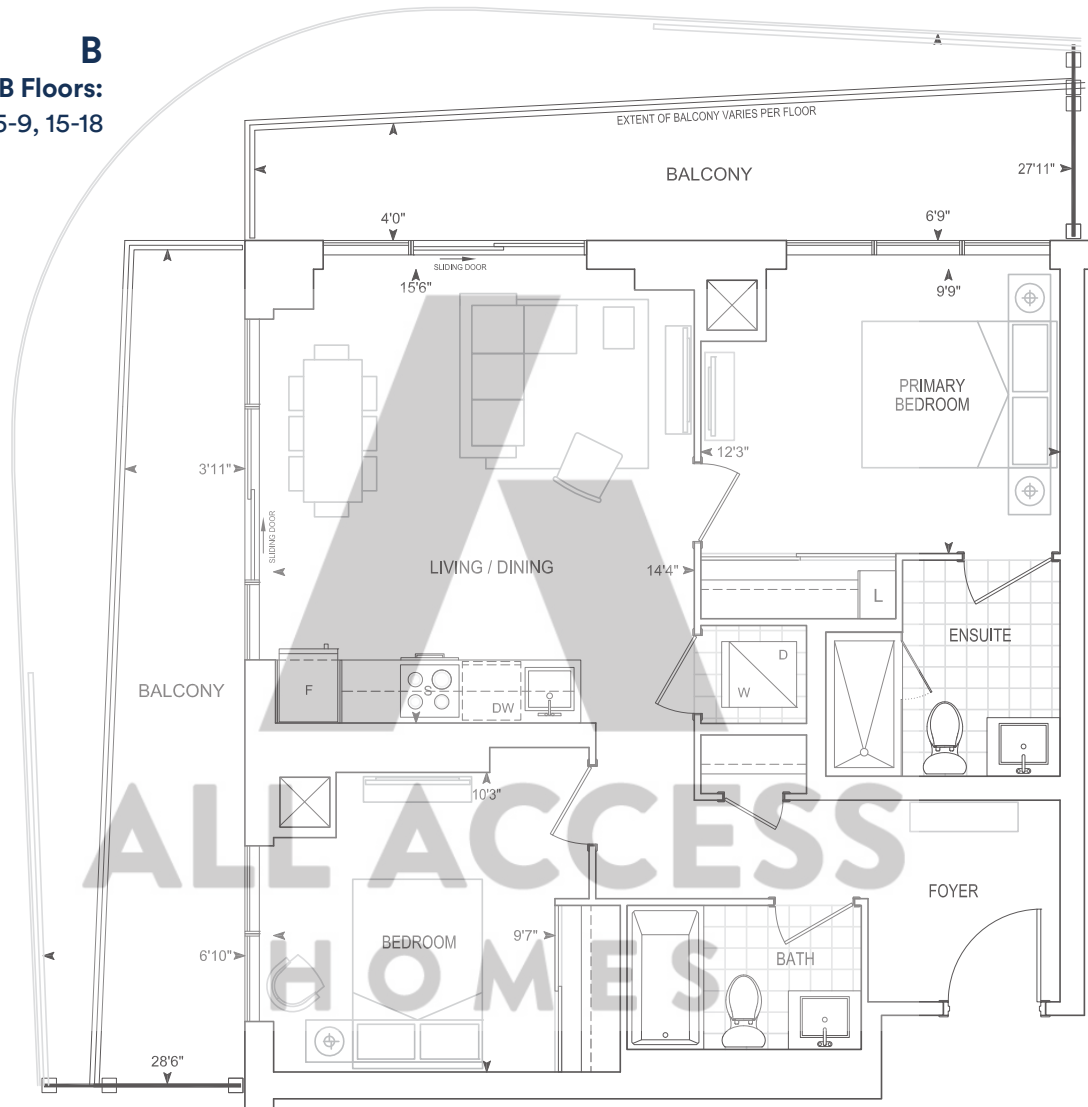
2 BEDROOM

Barrier Free

Exterior A 240 sq.ft. Interior 812 sq.ft. Total 1,052 sq.ft.
 Exterior B 435 sq.ft. Interior 812 sq.ft. Total 1,247 sq.ft.

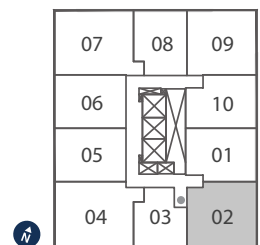
B
 Ext. B Floors:
 5-9, 15-18

A
 Ext. A Floors:
 10-12, 14, 19-21,
 26-28



9' CEILINGS
 FLOORS 5 - 10, 12, 14 - 21, 26 - 28

THOMPSON SERIES 10' CEILINGS
 FLOOR 11



**FLOORS 5 - 12,
 14 - 21 & 26 - 28**

Dimensions, specifications, layouts, location of materials and fixtures, tile floor patterns and architectural detailing (including window size and location and door size, location and swing) are approximate only and are subject to change or modifications, without notice. Actual usable floor space varies from stated floor area. Orientation of suite may be reverse and Purchaser agrees to accept same. Balconies, terraces and patios are exclusive use common elements shown for display purposes only and location and size are subject to change without notice. All illustrations are artist concept only. The provisions of Schedule "X" of this Agreement, including Section 6 and 38 apply to this Schedule. E. & O.E. May 2023

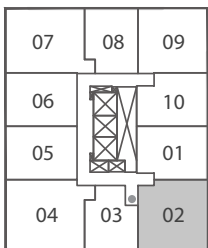
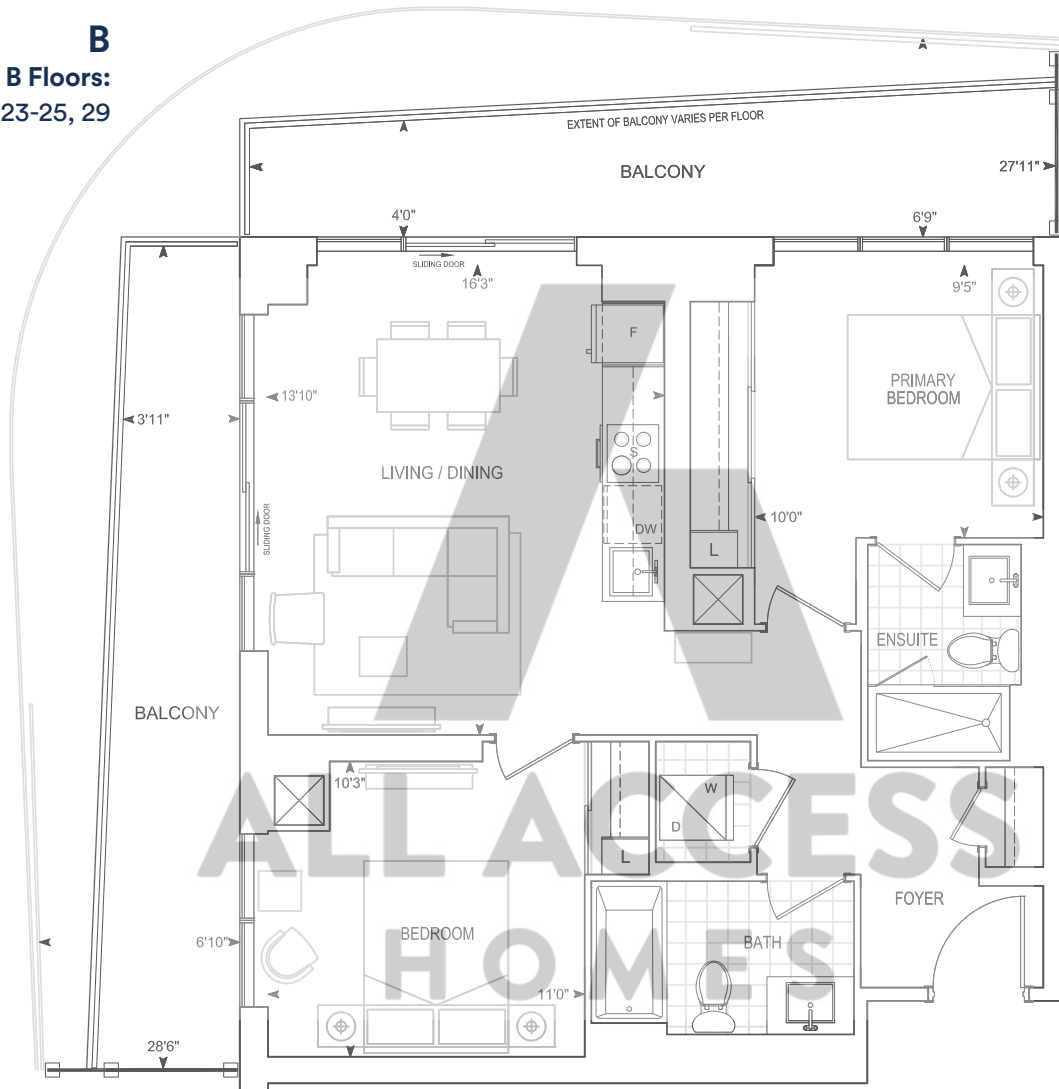
Exterior A 240 sq.ft. Interior 812 sq.ft. Total 1,052sq.ft.
 Exterior B 435 sq.ft. Interior 812 sq.ft. Total 1,247 sq.ft.

C812

2 BEDROOM

B
 Ext. B Floors:
 23-25, 29

A
 Ext. A Floor:
 22



FLOORS 22 - 25 & 29

9' CEILINGS
 FLOORS 23 - 25, 29

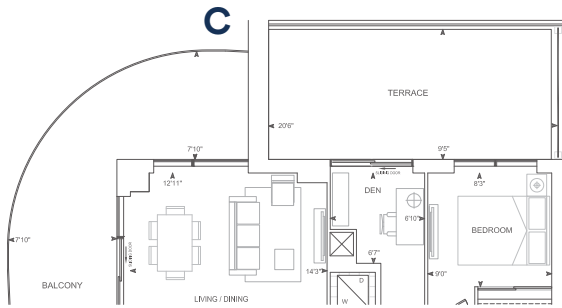
THOMPSON SERIES 10' CEILINGS
 FLOOR 22

Dimensions, specifications, layouts, location of materials and fixtures, tile floor patterns and architectural detailing (including window size and location and door size, location and swing) are approximate only and are subject to change or modifications, without notice. Actual usable floor space varies from stated floor area. Orientation of suite may be reverse and Purchaser agrees to accept same. Balconies, terraces and patios are exclusive use common elements shown for display purposes only and location and size are subject to change without notice. All illustrations are artist concept only. The provisions of Schedule "X" of this Agreement, including Section 6 and 38 apply to this Schedule. E. & O.E. May 2023

D880

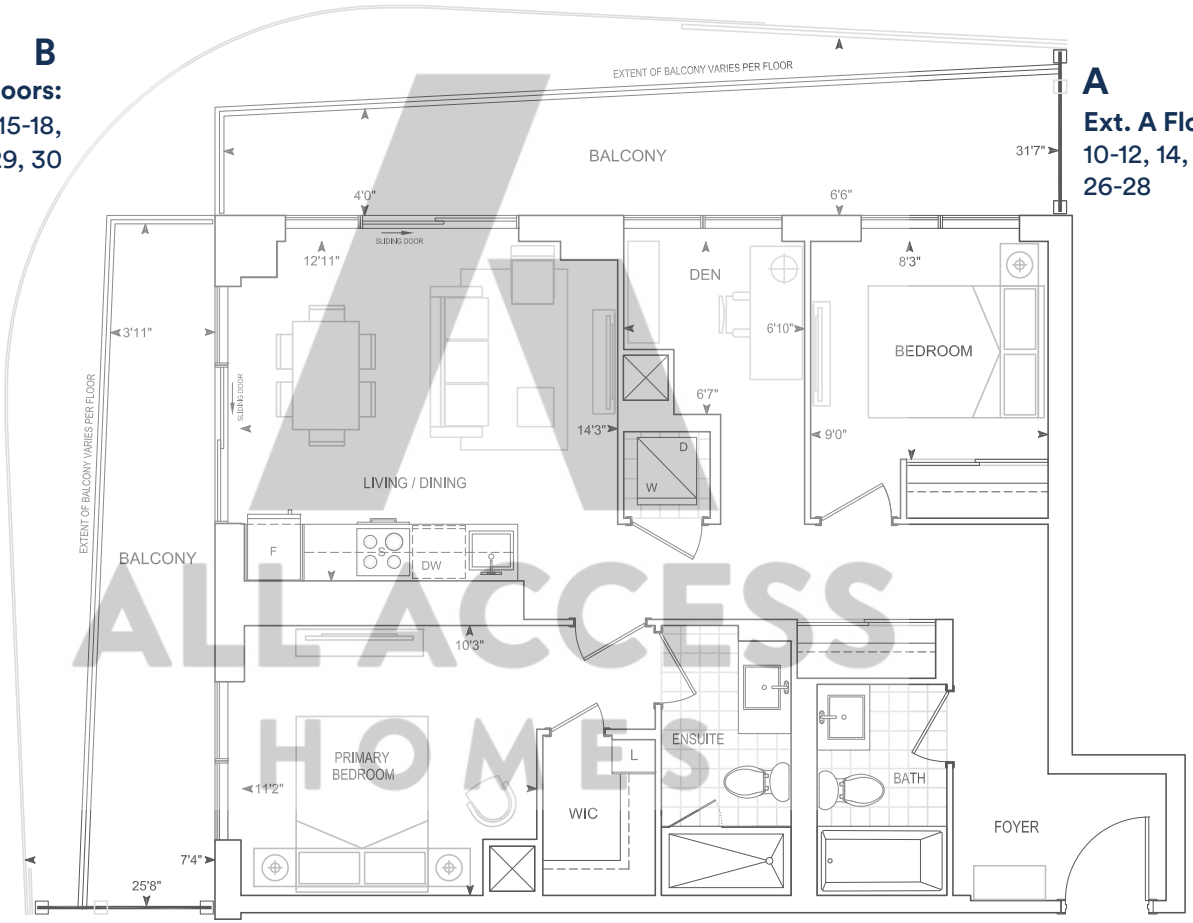
2 BEDROOM + DEN

Exterior A 248 sq.ft. **Interior** 880 sq.ft. **Total** 1,128 sq.ft.
Exterior B 450 sq.ft. **Interior** 880 sq.ft. **Total** 1,330 sq.ft.
Exterior C 489 sq.ft. **Interior** 880 sq.ft. **Total** 1,369 sq.ft.



FLOOR 5 Ext. C

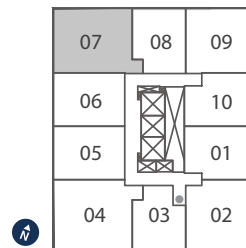
B
Ext. B Floors:
 6-9, 15-18,
 23-25, 29, 30



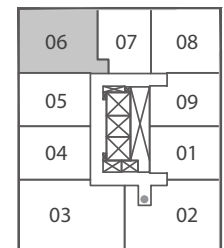
A
Ext. A Floors:
 10-12, 14, 19-22,
 26-28

9' CEILINGS
FLOORS 5 - 10, 12, 14 - 21, 23 - 29

THOMPSON SERIES 10' CEILINGS
FLOORS 11, 22, 30



FLOORS 5 - 12 & 14 - 29



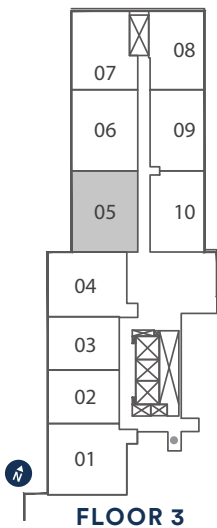
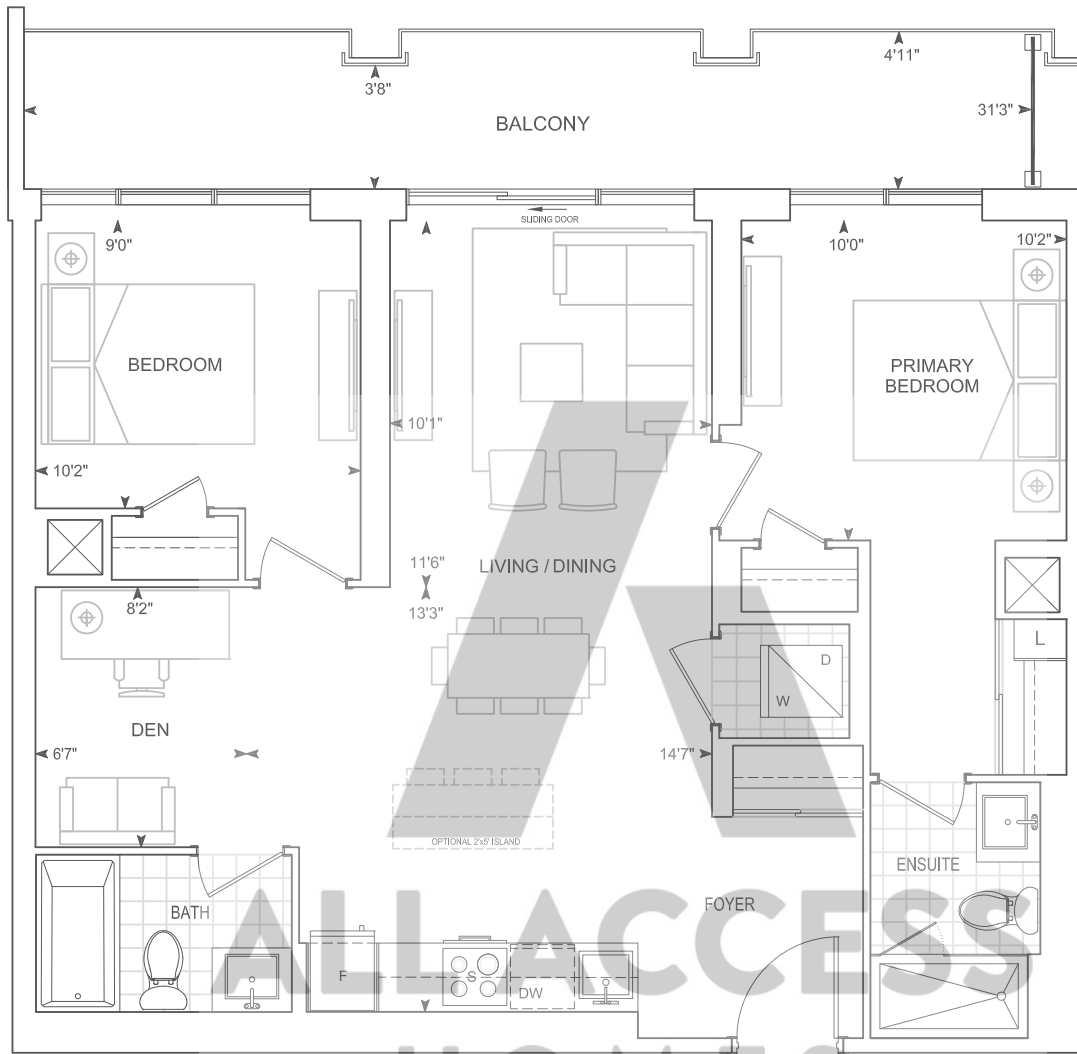
FLOOR 30

Dimensions, specifications, layouts, location of materials and fixtures, tile floor patterns and architectural detailing (including window size and location and door size, location and swing) are approximate only and are subject to change or modifications, without notice. Actual usable floor space varies from stated floor area. Orientation of suite may be reverse and Purchaser agrees to accept same. Balconies, terraces and patios are exclusive use common elements shown for display purposes only and location and size are subject to change without notice. All illustrations are artist concept only. The provisions of Schedule "X" of this Agreement, including Section 6 and 38 apply to this Schedule. E. & O.E. May 2023

Exterior 145 sq.ft. Interior 902 sq.ft. Total 1,047 sq.ft.

D902

2 BEDROOM + DEN



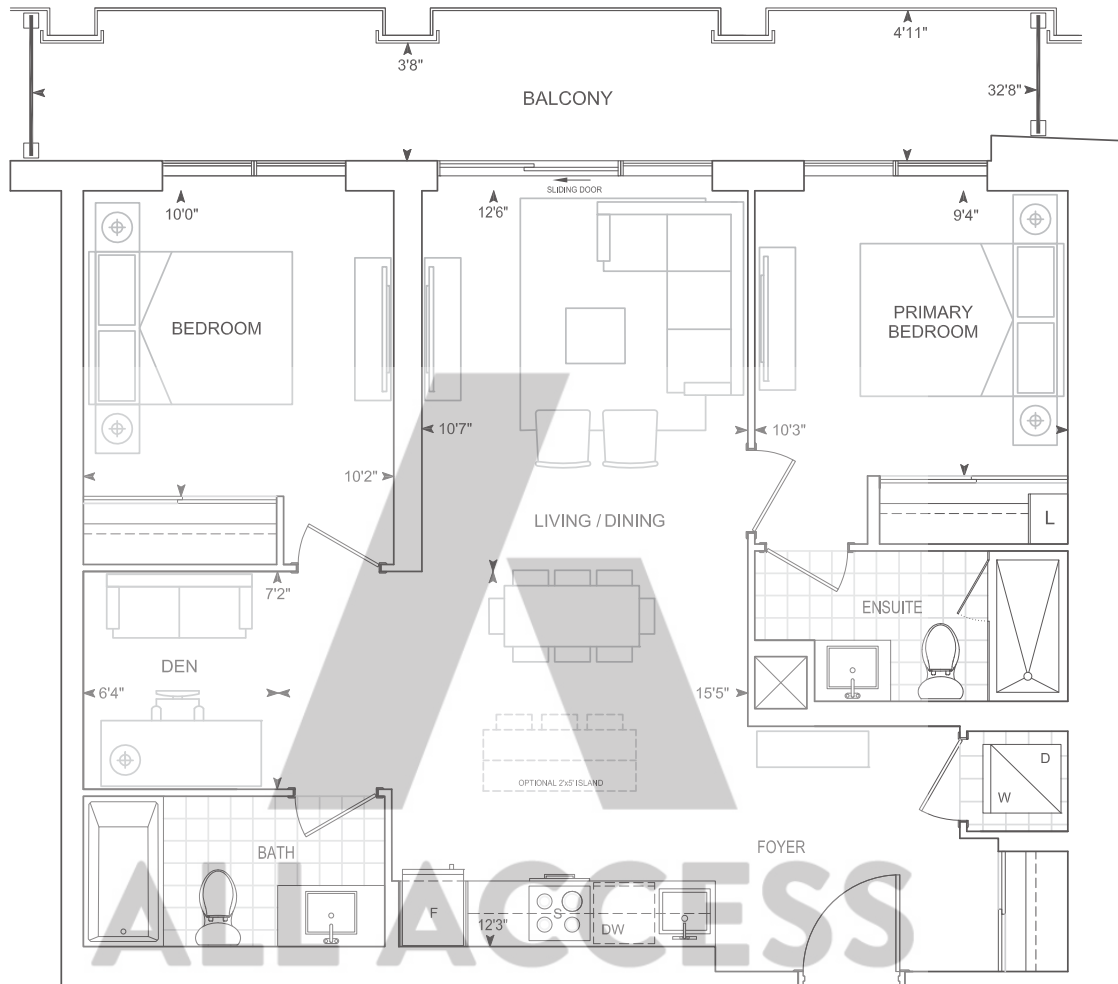
**9' CEILINGS
FLOOR 3**

Dimensions, specifications, layouts, location of materials and fixtures, tile floor patterns and architectural detailing (including window size and location and door size, location and swing) are approximate only and are subject to change or modifications, without notice. Actual usable floor space varies from stated floor area. Orientation of suite may be reverse and Purchaser agrees to accept same. Balconies, terraces and patios are exclusive use common elements shown for display purposes only and location and size are subject to change without notice. All illustrations are artist concept only. The provisions of Schedule "X" of this Agreement, including Section 6 and 38 apply to this Schedule. E. & O.E. May 2023

D903

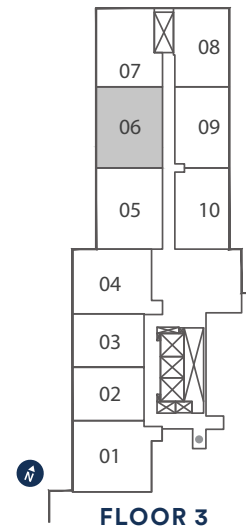
Exterior 150 sq.ft. Interior 903 sq.ft. Total 1,053 sq.ft.

2 BEDROOM + DEN



ALL ACCESS HOMES

9' CEILINGS
FLOOR 3

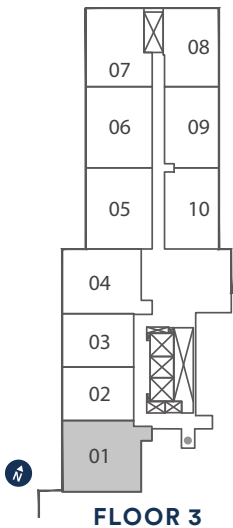
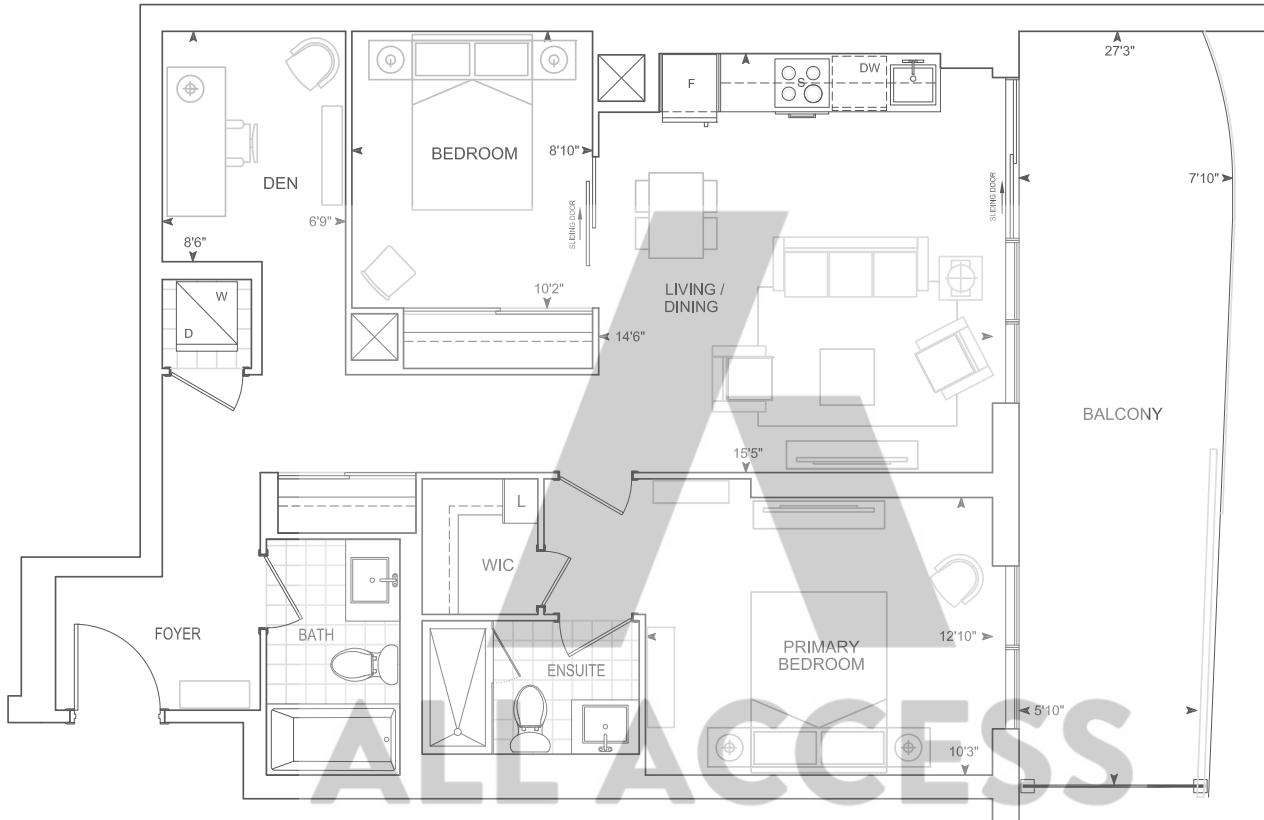


Dimensions, specifications, layouts, location of materials and fixtures, tile floor patterns and architectural detailing (including window size and location and door size, location and swing) are approximate only and are subject to change or modifications, without notice. Actual usable floor space varies from stated floor area. Orientation of suite may be reverse and Purchaser agrees to accept same. Balconies, terraces and patios are exclusive use common elements shown for display purposes only and location and size are subject to change without notice. All illustrations are artist concept only. The provisions of Schedule "X" of this Agreement, including Section 6 and 38 apply to this Schedule. E. & O.E. May 2023

Exterior 198 sq.ft. Interior 956 sq.ft. Total 1,154 sq.ft.

D956

2 BEDROOM + DEN



FLOOR 3

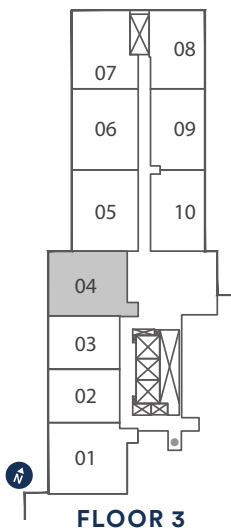
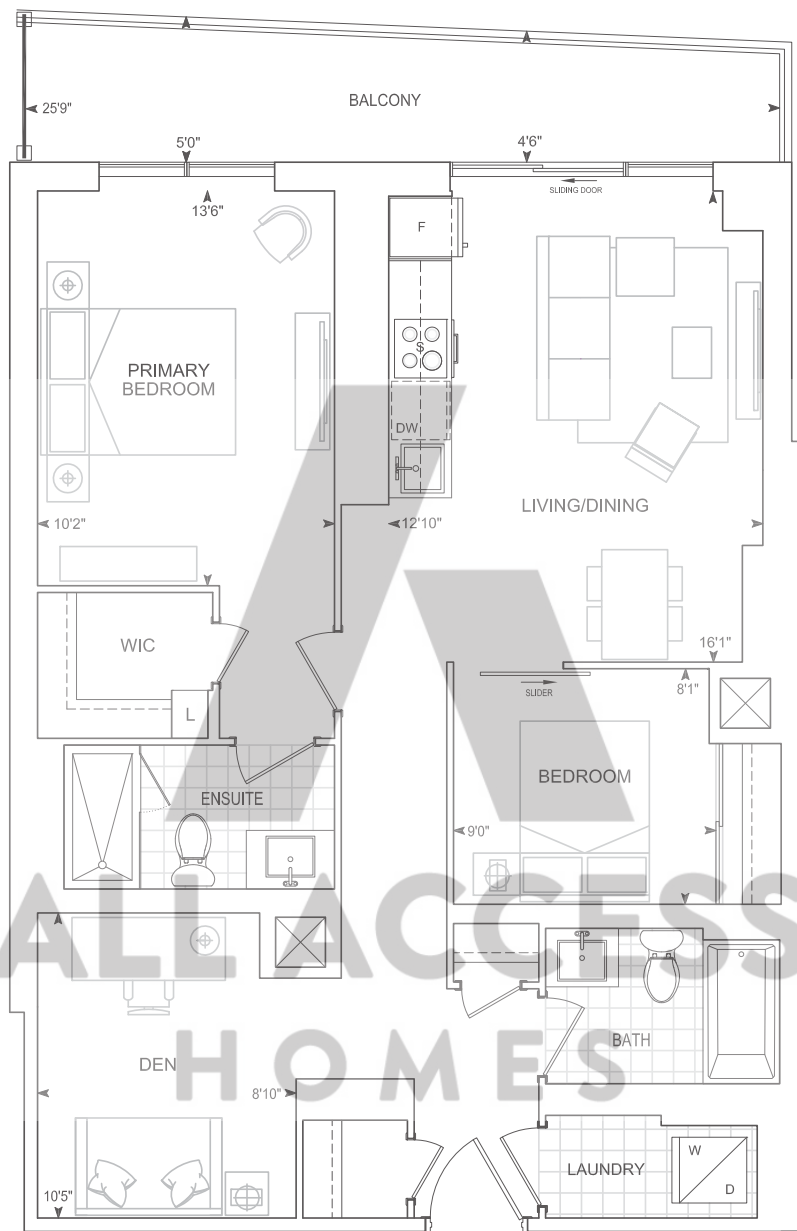
9' CEILINGS
FLOOR 3

Dimensions, specifications, layouts, location of materials and fixtures, tile floor patterns and architectural detailing (including window size and location and door size, location and swing) are approximate only and are subject to change or modifications, without notice. Actual usable floor space varies from stated floor area. Orientation of suite may be reverse and Purchaser agrees to accept same. Balconies, terraces and patios are exclusive use common elements shown for display purposes only and location and size are subject to change without notice. All illustrations are artist concept only. The provisions of Schedule "X" of this Agreement, including Section 6 and 38 apply to this Schedule. E. & O.E. May 2023

Exterior 107 sq.ft. Interior 974 sq.ft. Total 1,081 sq.ft.

D974

2 BEDROOM + DEN



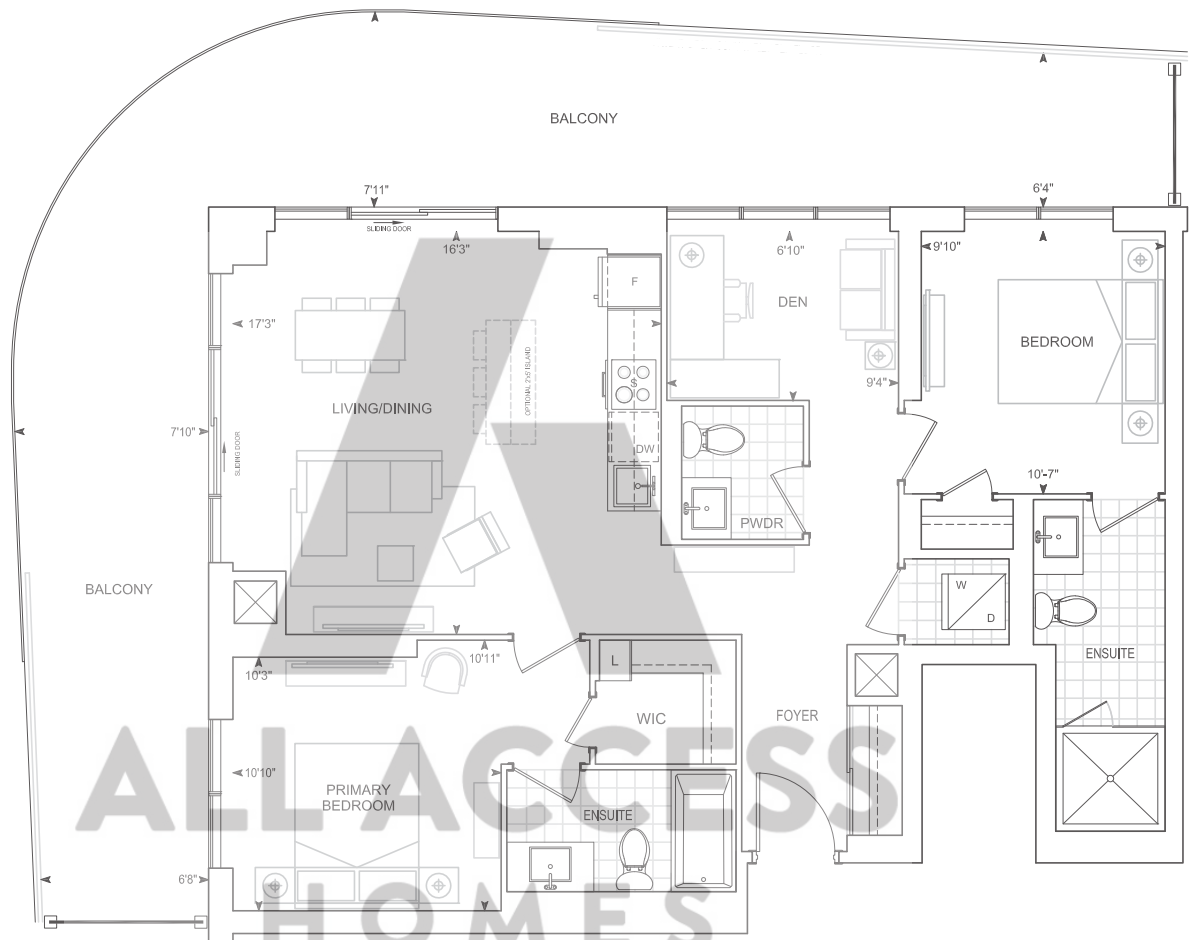
9' CEILINGS
FLOOR 3

Dimensions, specifications, layouts, location of materials and fixtures, tile floor patterns and architectural detailing (including window size and location and door size, location and swing) are approximate only and are subject to change or modifications, without notice. Actual usable floor space varies from stated floor area. Orientation of suite may be reverse and Purchaser agrees to accept same. Balconies, terraces and patios are exclusive use common elements shown for display purposes only and location and size are subject to change without notice. All illustrations are artist concept only. The provisions of Schedule "X" of this Agreement, including Section 6 and 38 apply to this Schedule. E. & O.E. May 2023

D1062

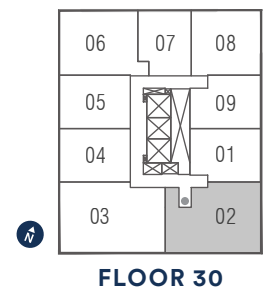
Exterior 501 sq.ft. Interior 1062 sq.ft. Total 1,563 sq.ft.

2 BEDROOM + DEN



ALL ACCESS HOMES

THOMPSON SERIES 10' CEILINGS
FLOOR 30



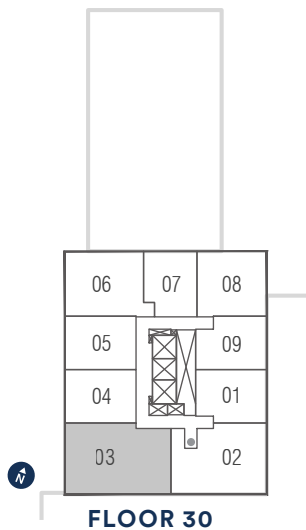
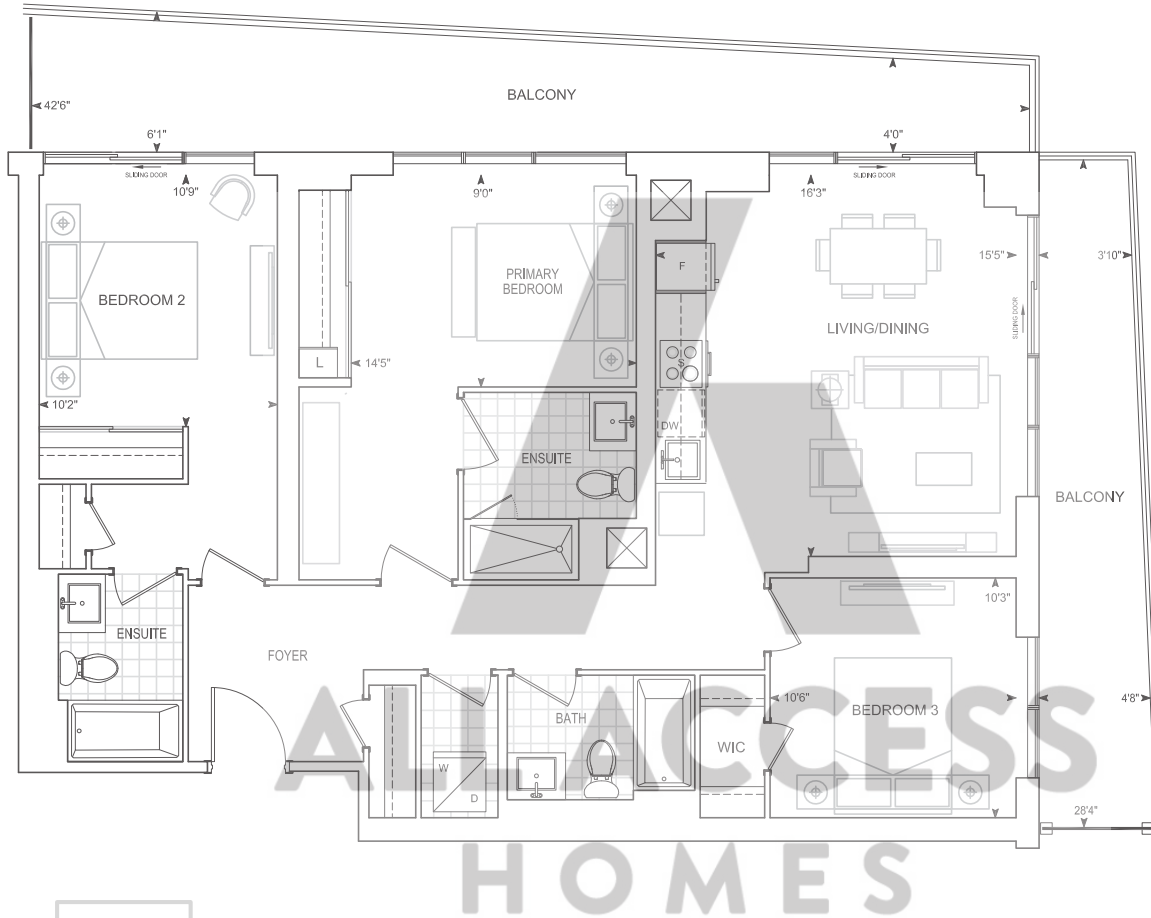
Dimensions, specifications, layouts, location of materials and fixtures, tile floor patterns and architectural detailing (including window size and location and door size, location and swing) are approximate only and are subject to change or modifications, without notice. Actual usable floor space varies from stated floor area. Orientation of suite may be reverse and Purchaser agrees to accept same. Balconies, terraces and patios are exclusive use common elements shown for display purposes only and location and size are subject to change without notice. All illustrations are artist concept only. The provisions of Schedule "X" of this Agreement, including Section 6 and 38 apply to this Schedule. E. & O.E. May 2023

Exterior 321 sq.ft. Interior 1227 sq.ft. Total 1,548 sq.ft.

E1227-BF

3 BEDROOM

Barrier Free



THOMPSON SERIES 10' CEILINGS
FLOOR 30

Dimensions, specifications, layouts, location of materials and fixtures, tile floor patterns and architectural detailing (including window size and location and door size, location and swing) are approximate only and are subject to change or modifications, without notice. Actual usable floor space varies from stated floor area. Orientation of suite may be reverse and Purchaser agrees to accept same. Balconies, terraces and patios are exclusive use common elements shown for display purposes only and location and size are subject to change without notice. All illustrations are artist concept only. The provisions of Schedule "X" of this Agreement, including Section 6 and 38 apply to this Schedule. E. & O.E. May 2023

Penthouse Suites & Townhomes

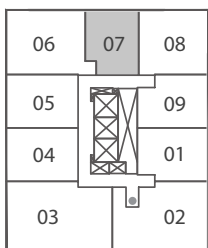
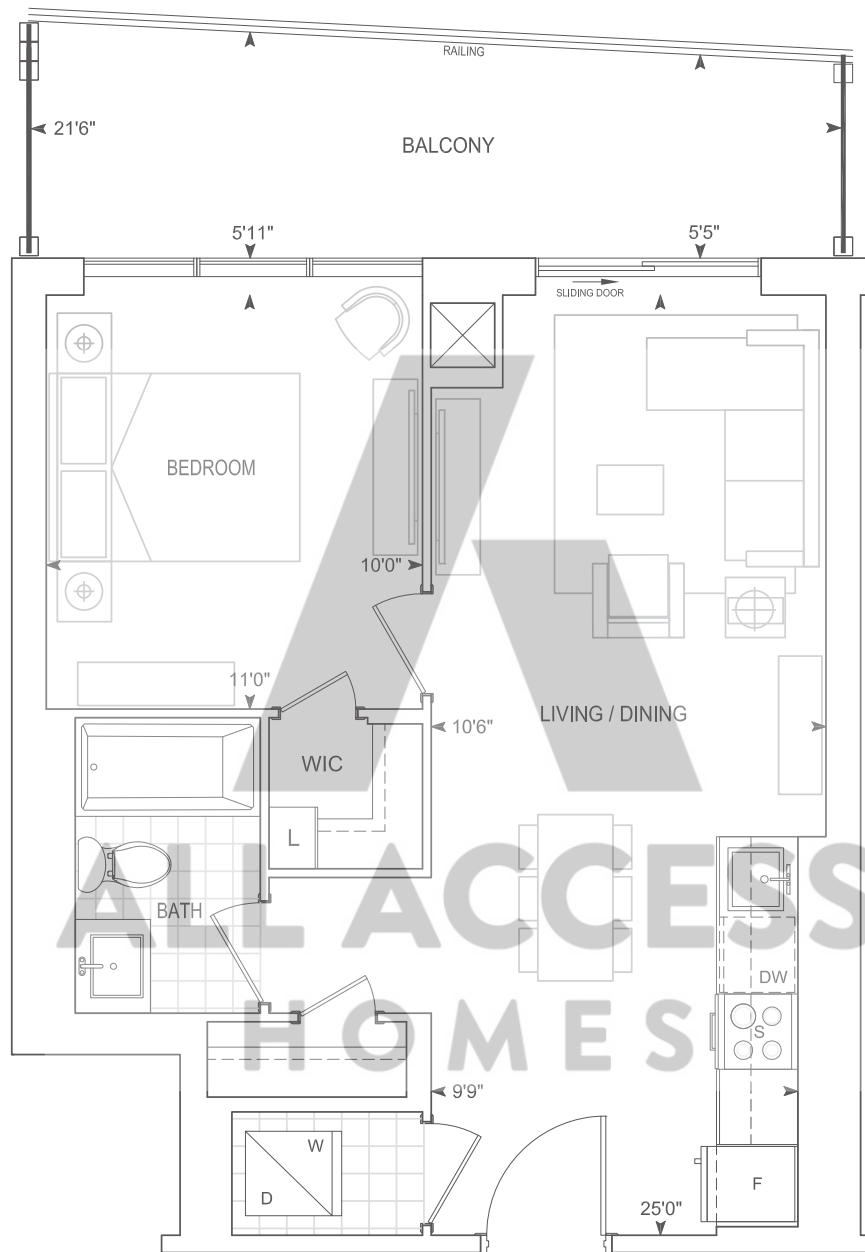


*artist's impression

Exterior 120 sq.ft. Interior 555 sq.ft. Total 675 sq.ft.

A555 PH

1 BEDROOM



PENTHOUSE

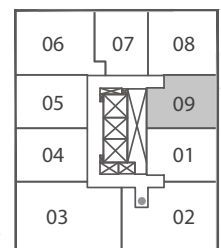
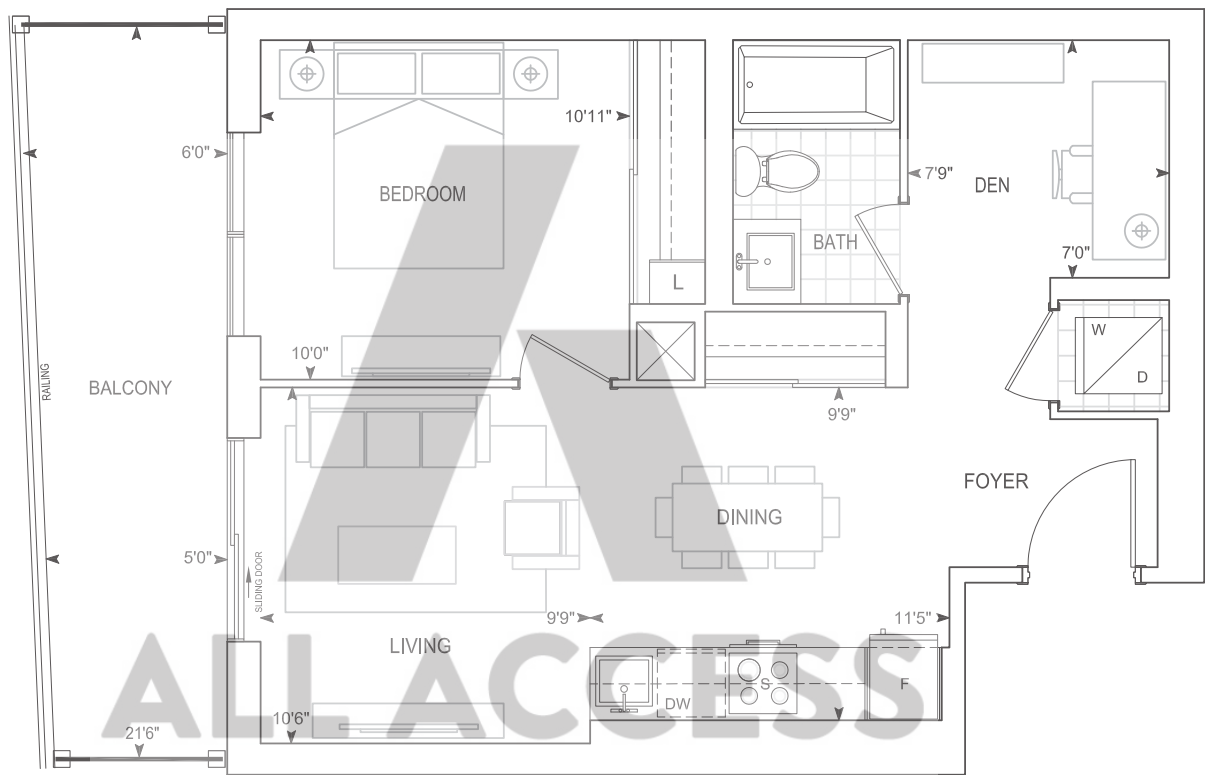
PENTHOUSE 10' CEILINGS

Dimensions, specifications, layouts, location of materials and fixtures, tile floor patterns and architectural detailing (including window size and location and door size, location and swing) are approximate only and are subject to change or modifications, without notice. Actual usable floor space varies from stated floor area. Orientation of suite may be reverse and Purchaser agrees to accept same. Balconies, terraces and patios are exclusive use common elements shown for display purposes only and location and size are subject to change without notice. All illustrations are artist concept only. The provisions of Schedule "X" of this Agreement, including Section 6 and 38 apply to this Schedule. E. & O.E. May 2023

B595 PH

1 BEDROOM + DEN

Exterior 110 sq.ft. Interior 595 sq.ft. Total 705 sq.ft.



PENTHOUSE

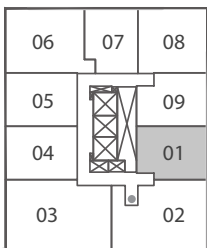
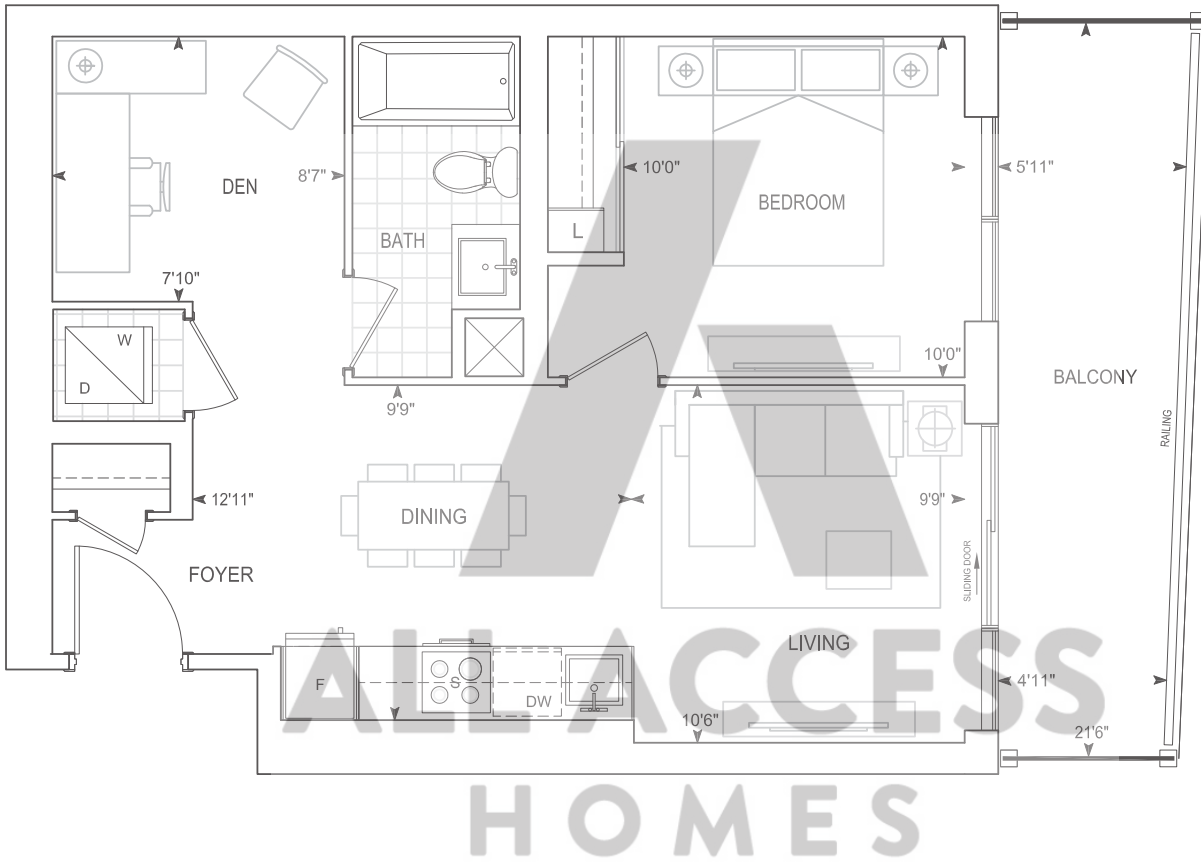
PENTHOUSE 10' CEILINGS

Dimensions, specifications, layouts, location of materials and fixtures, tile floor patterns and architectural detailing (including window size and location and door size, location and swing) are approximate only and are subject to change or modifications, without notice. Actual usable floor space varies from stated floor area. Orientation of suite may be reverse and Purchaser agrees to accept same. Balconies, terraces and patios are exclusive use common elements shown for display purposes only and location and size are subject to change without notice. All illustrations are artist concept only. The provisions of Schedule "X" of this Agreement, including Section 6 and 38 apply to this Schedule. E. & O.E. May 2023

Exterior 130 sq.ft. Interior 614 sq.ft. Total 744 sq.ft.

B614 PH

1 BEDROOM + DEN



PENTHOUSE

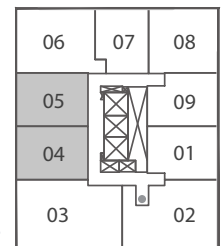
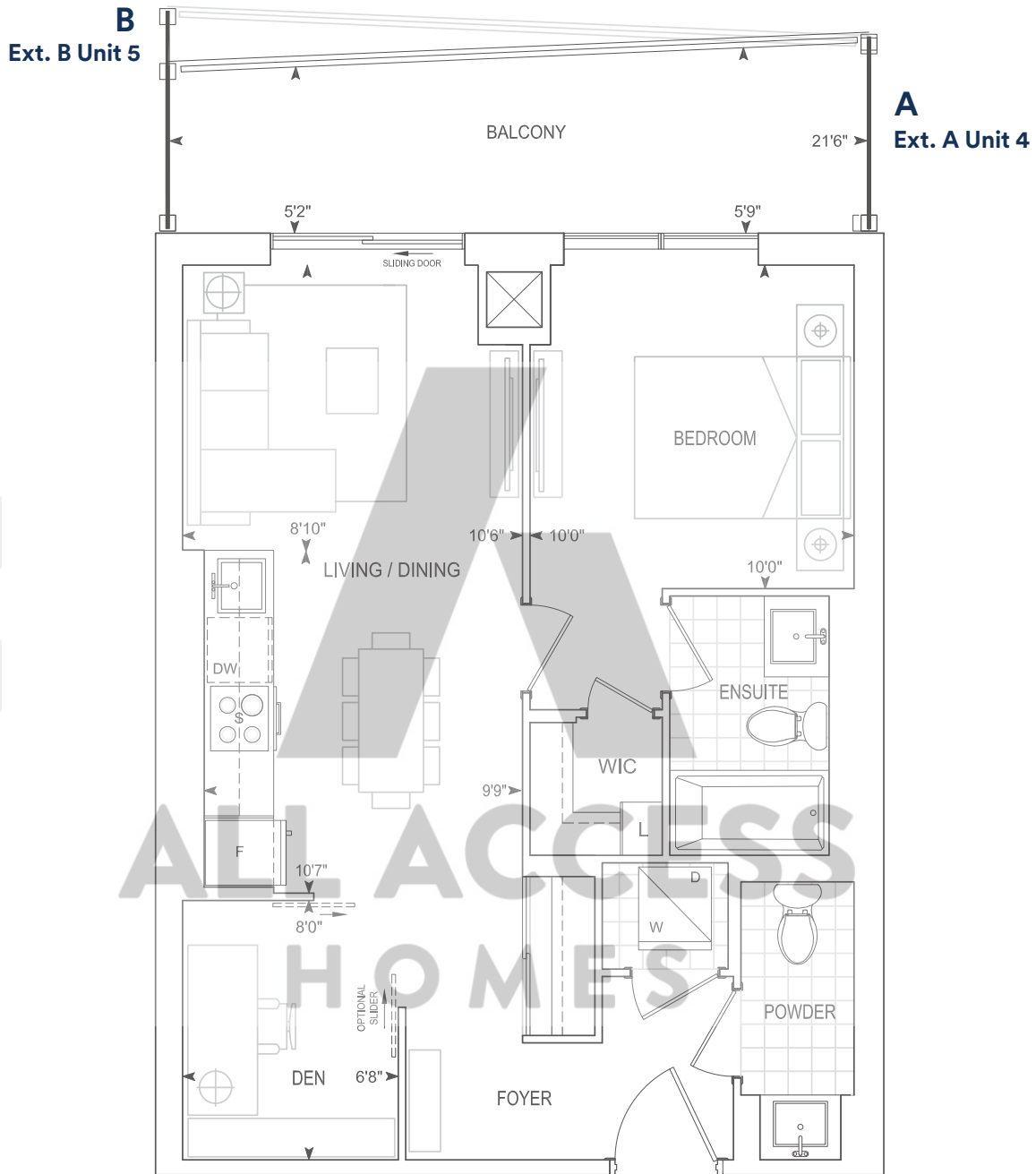
PENTHOUSE 10' CEILINGS

Dimensions, specifications, layouts, location of materials and fixtures, tile floor patterns and architectural detailing (including window size and location and door size, location and swing) are approximate only and are subject to change or modifications, without notice. Actual usable floor space varies from stated floor area. Orientation of suite may be reverse and Purchaser agrees to accept same. Balconies, terraces and patios are exclusive use common elements shown for display purposes only and location and size are subject to change without notice. All illustrations are artist concept only. The provisions of Schedule "X" of this Agreement, including Section 6 and 38 apply to this Schedule. E. & O.E. May 2023

B637 PH

1 BEDROOM + DEN

Exterior A 110 sq.ft. Interior 637 sq.ft. Total 747 sq.ft.
Exterior B 129 sq.ft. Interior 637 sq.ft. Total 766 sq.ft.



PENTHOUSE

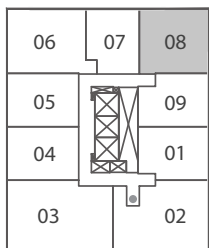
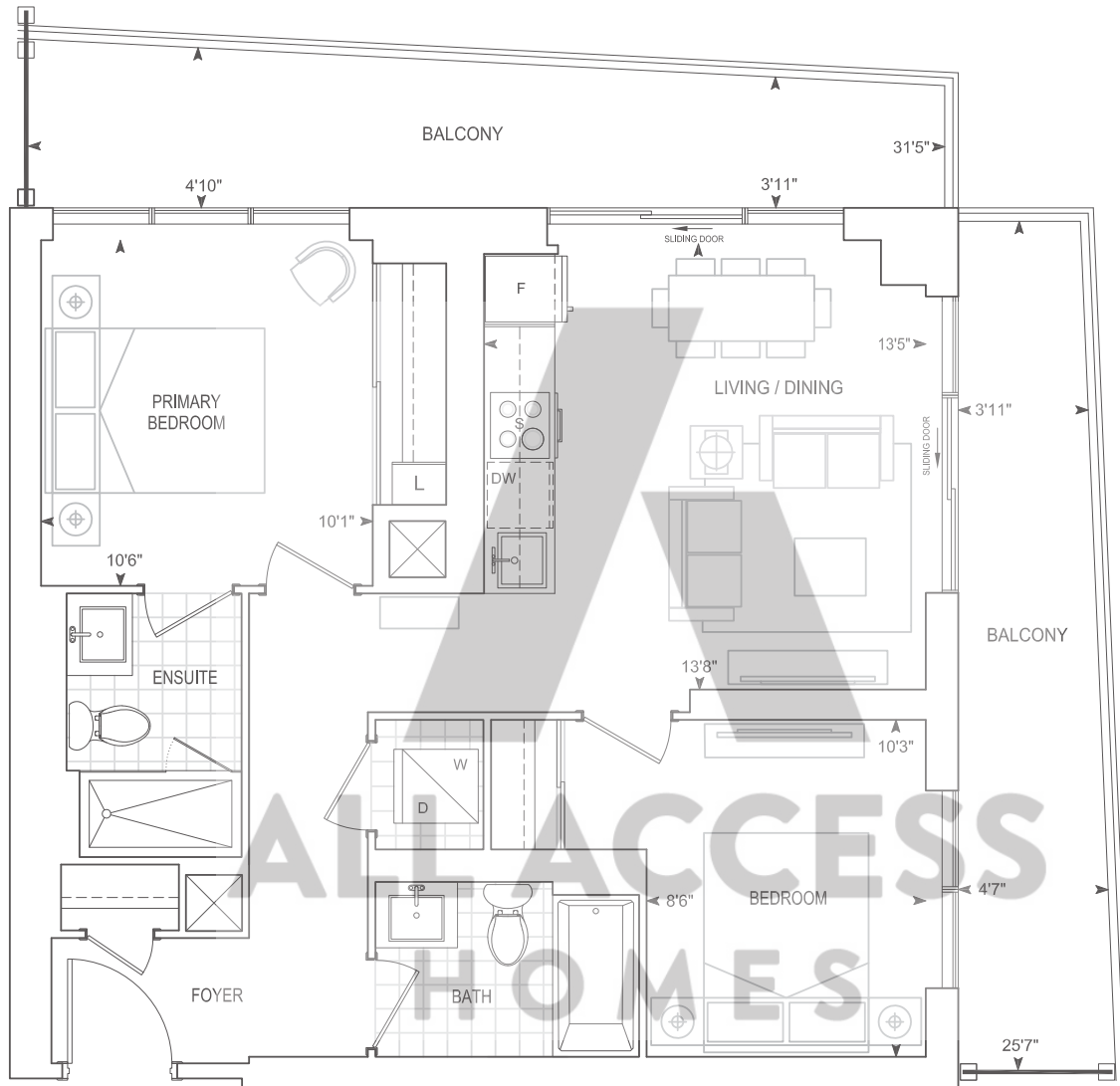
PENTHOUSE 10' CEILINGS

Dimensions, specifications, layouts, location of materials and fixtures, tile floor patterns and architectural detailing (including window size and location and door size, location and swing) are approximate only and are subject to change or modifications, without notice. Actual usable floor space varies from stated floor area. Orientation of suite may be reverse and Purchaser agrees to accept same. Balconies, terraces and patios are exclusive use common elements shown for display purposes only and location and size are subject to change without notice. All illustrations are artist concept only. The provisions of Schedule "X" of this Agreement, including Section 6 and 38 apply to this Schedule. E. & O.E. May 2023

Exterior 227 sq.ft. Interior 756 sq.ft. Total 983 sq.ft.

C756 PH

2 BEDROOM



PENTHOUSE

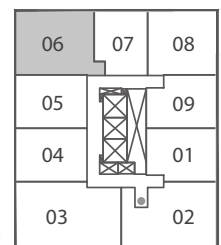
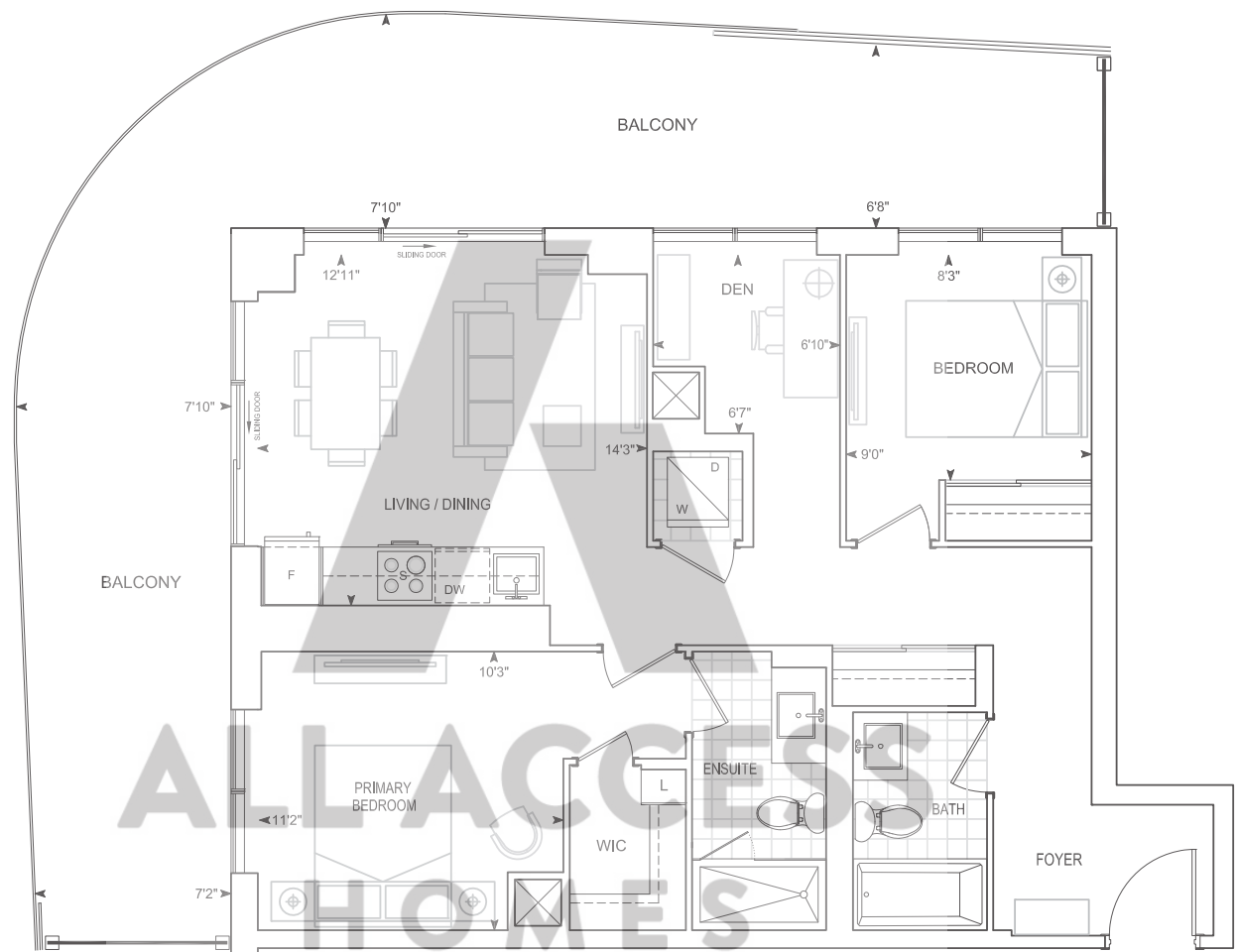
PENTHOUSE 10' CEILINGS

Dimensions, specifications, layouts, location of materials and fixtures, tile floor patterns and architectural detailing (including window size and location and door size, location and swing) are approximate only and are subject to change or modifications, without notice. Actual usable floor space varies from stated floor area. Orientation of suite may be reverse and Purchaser agrees to accept same. Balconies, terraces and patios are exclusive use common elements shown for display purposes only and location and size are subject to change without notice. All illustrations are artist concept only. The provisions of Schedule "X" of this Agreement, including Section 6 and 38 apply to this Schedule. E. & O.E. May 2023

D880 PH

Exterior 450 sq.ft. Interior 880 sq.ft. Total 1,330 sq.ft.

2 BEDROOM + DEN



PENTHOUSE

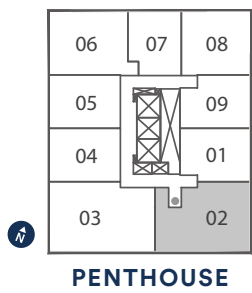
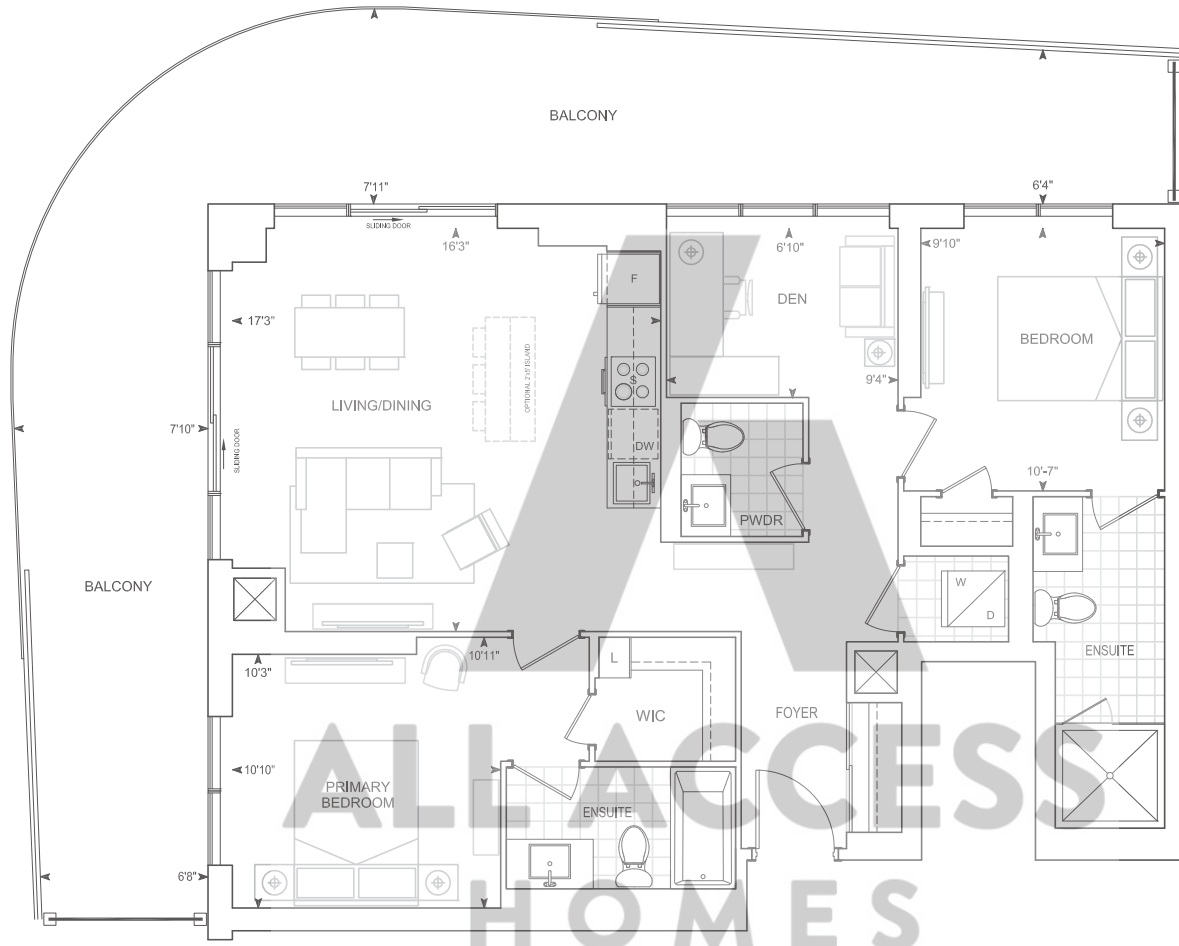
PENTHOUSE 10' CEILINGS

Dimensions, specifications, layouts, location of materials and fixtures, tile floor patterns and architectural detailing (including window size and location and door size, location and swing) are approximate only and are subject to change or modifications, without notice. Actual usable floor space varies from stated floor area. Orientation of suite may be reverse and Purchaser agrees to accept same. Balconies, terraces and patios are exclusive use common elements shown for display purposes only and location and size are subject to change without notice. All illustrations are artist concept only. The provisions of Schedule "X" of this Agreement, including Section 6 and 38 apply to this Schedule. E. & O.E. May 2023

Exterior 501 sq.ft. Interior 1,062 sq.ft. Total 1,563 sq.ft.

D1062 PH

2 BEDROOM + DEN



PENTHOUSE 10' CEILINGS

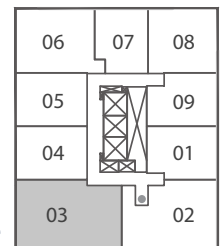
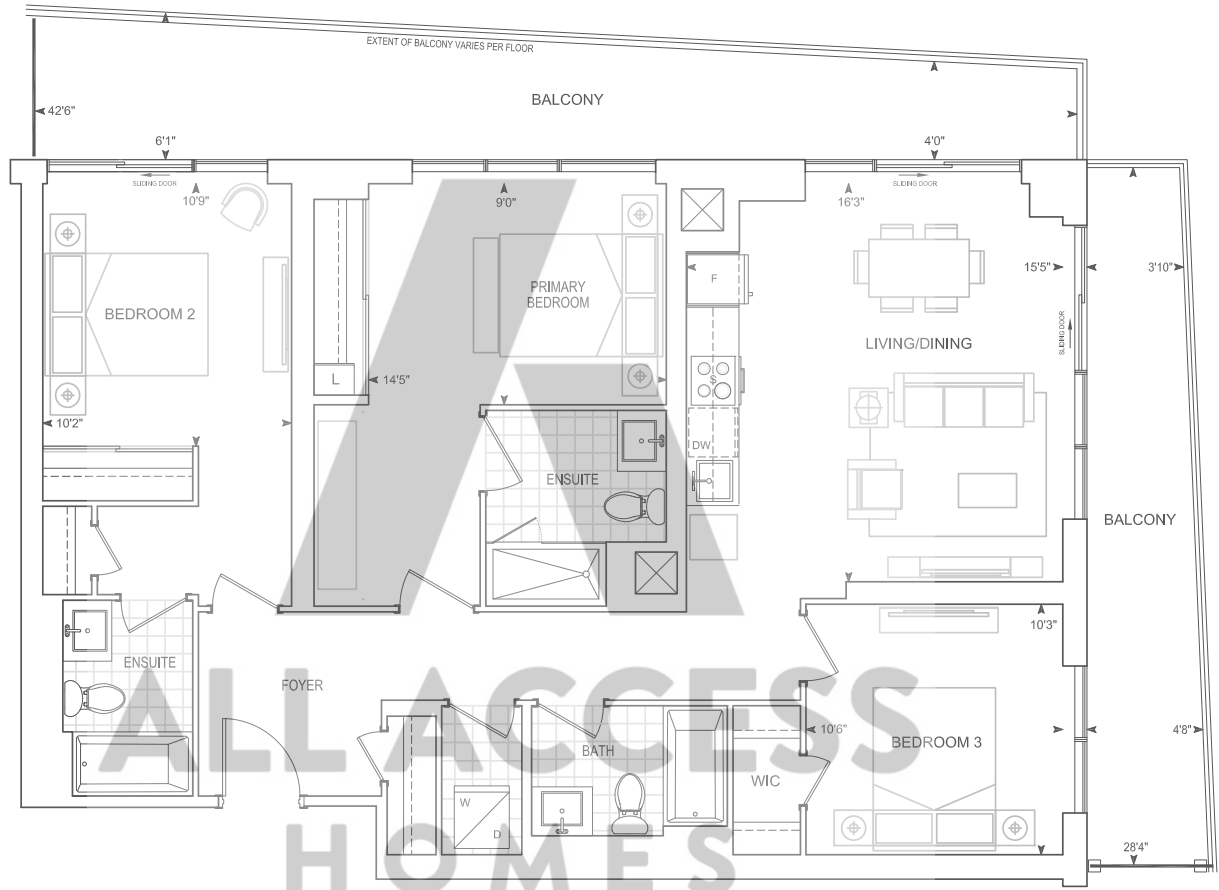
Dimensions, specifications, layouts, location of materials and fixtures, tile floor patterns and architectural detailing (including window size and location and door size, location and swing) are approximate only and are subject to change or modifications, without notice. Actual usable floor space varies from stated floor area. Orientation of suite may be reverse and Purchaser agrees to accept same. Balconies, terraces and patios are exclusive use common elements shown for display purposes only and location and size are subject to change without notice. All illustrations are artist concept only. The provisions of Schedule "X" of this Agreement, including Section 6 and 38 apply to this Schedule. E. & O.E. May 2023

E1227-BF PH

Exterior 321 sq.ft. Interior 1,227 sq.ft. Total 1,548 sq.ft.

3 BEDROOM

Barrier Free



PENTHOUSE

PENTHOUSE 10' CEILINGS

Dimensions, specifications, layouts, location of materials and fixtures, tile floor patterns and architectural detailing (including window size and location and door size, location and swing) are approximate only and are subject to change or modifications, without notice. Actual usable floor space varies from stated floor area. Orientation of suite may be reverse and Purchaser agrees to accept same. Balconies, terraces and patios are exclusive use common elements shown for display purposes only and location and size are subject to change without notice. All illustrations are artist concept only. The provisions of Schedule "X" of this Agreement, including Section 6 and 38 apply to this Schedule. E. & O.E. May 2023

Exterior 23 sq.ft. Interior 919 sq.ft. Total 942 sq.ft.

TH919

2 BEDROOM + DEN



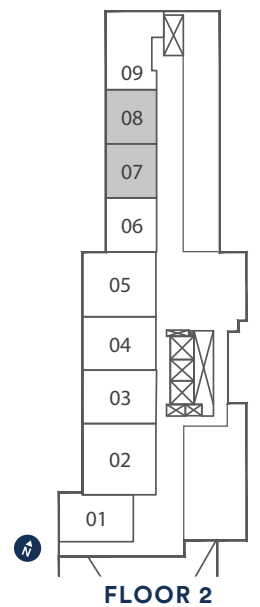
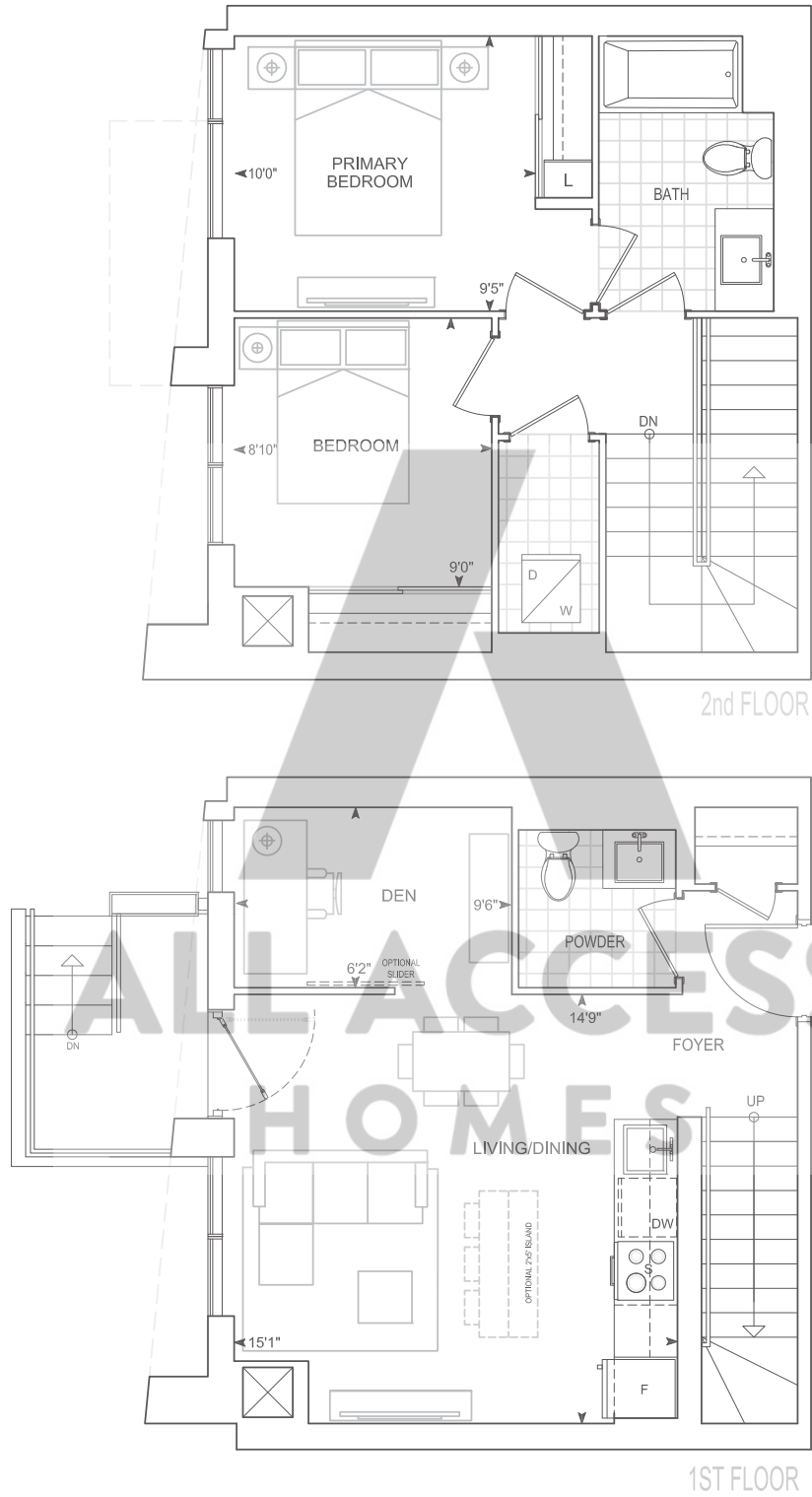
TOWNHOME 10' CEILINGS FLOOR 1
9' CEILINGS FLOOR 2

Dimensions, specifications, layouts, location of materials and fixtures, tile floor patterns and architectural detailing (including window size and location and door size, location and swing) are approximate only and are subject to change or modifications, without notice. Actual usable floor space varies from stated floor area. Orientation of suite may be reverse and Purchaser agrees to accept same. Balconies, terraces and patios are exclusive use common elements shown for display purposes only and location and size are subject to change without notice. All illustrations are artist concept only. The provisions of Schedule "X" of this Agreement, including Section 6 and 38 apply to this Schedule. E. & O.E. May 2023

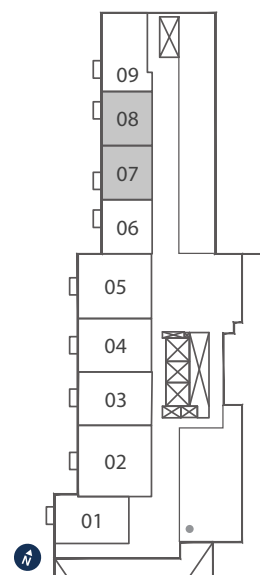
TH920

2 BEDROOM + DEN

Exterior 23 sq.ft. Interior 920 sq.ft. Total 943 sq.ft.



FLOOR 2



FLOOR 1

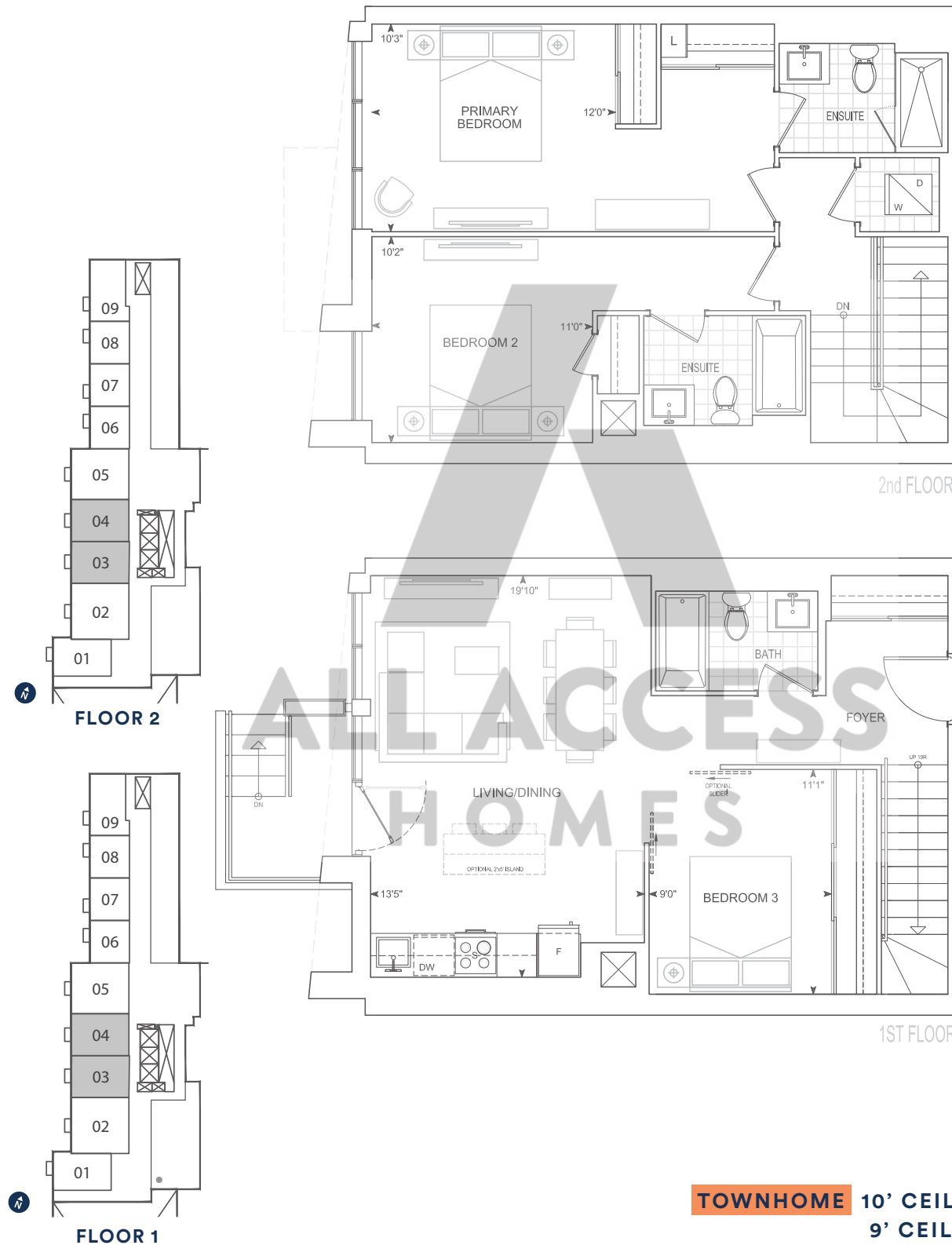
TOWNHOME 10' CEILINGS FLOOR 1
9' CEILINGS FLOOR 2

Dimensions, specifications, layouts, location of materials and fixtures, tile floor patterns and architectural detailing (including window size and location and door size, location and swing) are approximate only and are subject to change or modifications, without notice. Actual usable floor space varies from stated floor area. Orientation of suite may be reverse and Purchaser agrees to accept same. Balconies, terraces and patios are exclusive use common elements shown for display purposes only and location and size are subject to change without notice. All illustrations are artist concept only. The provisions of Schedule "X" of this Agreement, including Section 6 and 38 apply to this Schedule. E. & O.E. May 2023

Exterior 23 sq.ft. Interior 1,299 sq.ft. Total 1,322 sq.ft.

TH1299

3 BEDROOM

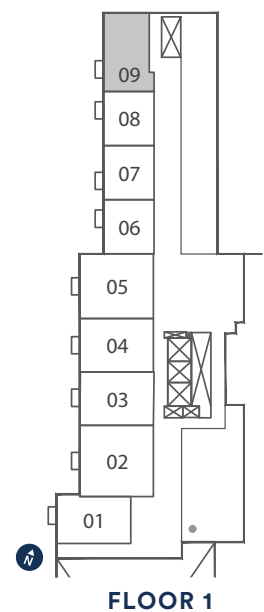
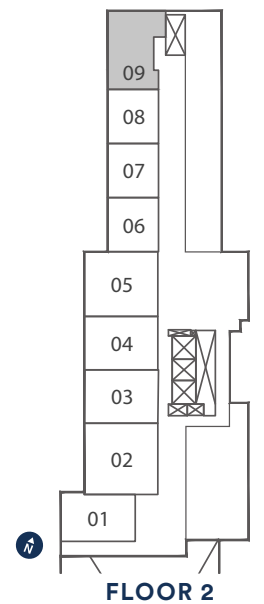
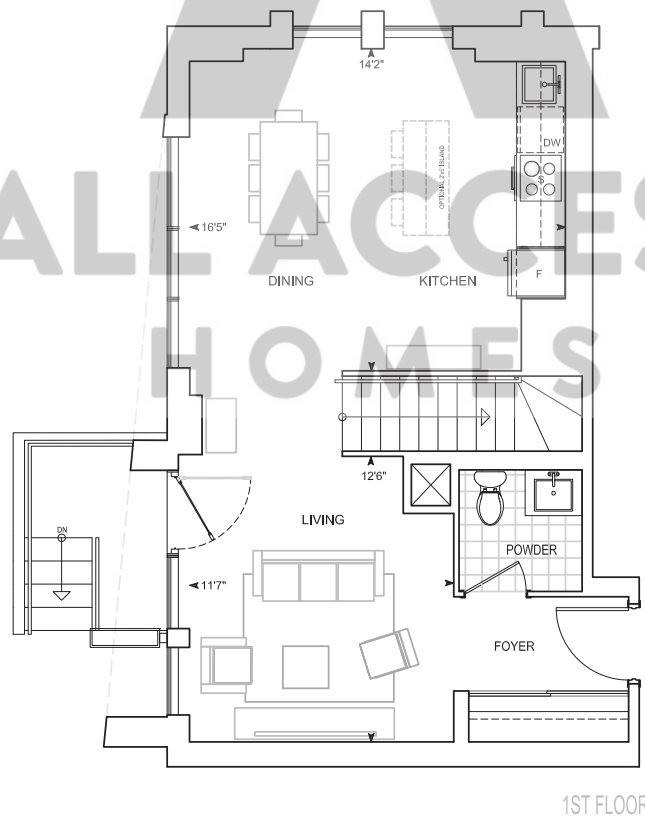
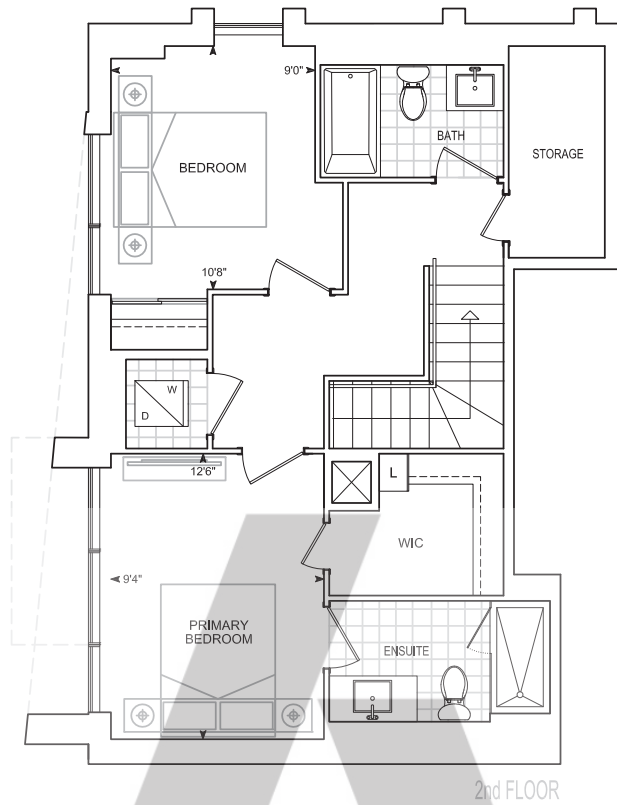


Dimensions, specifications, layouts, location of materials and fixtures, tile floor patterns and architectural detailing (including window size and location and door size, location and swing) are approximate only and are subject to change or modifications, without notice. Actual usable floor space varies from stated floor area. Orientation of suite may be reverse and Purchaser agrees to accept same. Balconies, terraces and patios are exclusive use common elements shown for display purposes only and location and size are subject to change without notice. All illustrations are artist concept only. The provisions of Schedule "X" of this Agreement, including Section 6 and 38 apply to this Schedule. E. & O.E. May 2023

TH1315

2 BEDROOM

Exterior 23 sq.ft. Interior 1,315 sq.ft. Total 1,338 sq.ft.



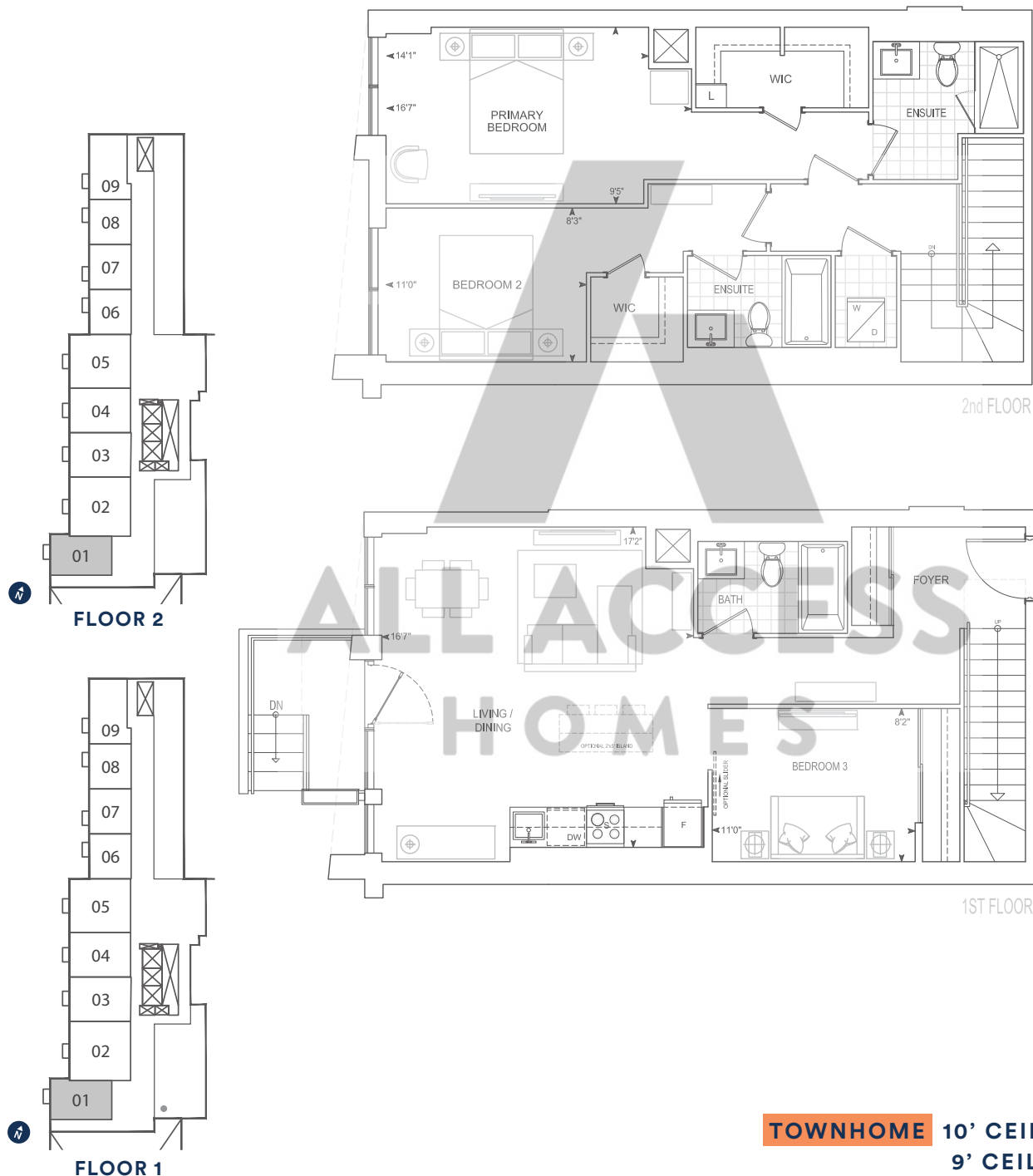
TOWNHOME 10' CEILINGS FLOOR 1
9' CEILINGS FLOOR 2

Dimensions, specifications, layouts, location of materials and fixtures, tile floor patterns and architectural detailing (including window size and location and door size, location and swing) are approximate only and are subject to change or modifications, without notice. Actual usable floor space varies from stated floor area. Orientation of suite may be reverse and Purchaser agrees to accept same. Balconies, terraces and patios are exclusive use common elements shown for display purposes only and location and size are subject to change without notice. All illustrations are artist concept only. The provisions of Schedule "X" of this Agreement, including Section 6 and 38 apply to this Schedule. E. & O.E. May 2023

Exterior 23 sq.ft. Interior 1,405 sq.ft. Total 1,428 sq.ft.

TH1405

3 BEDROOM



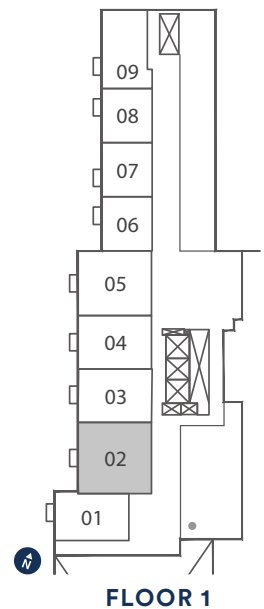
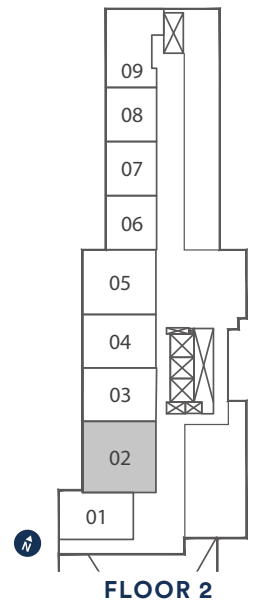
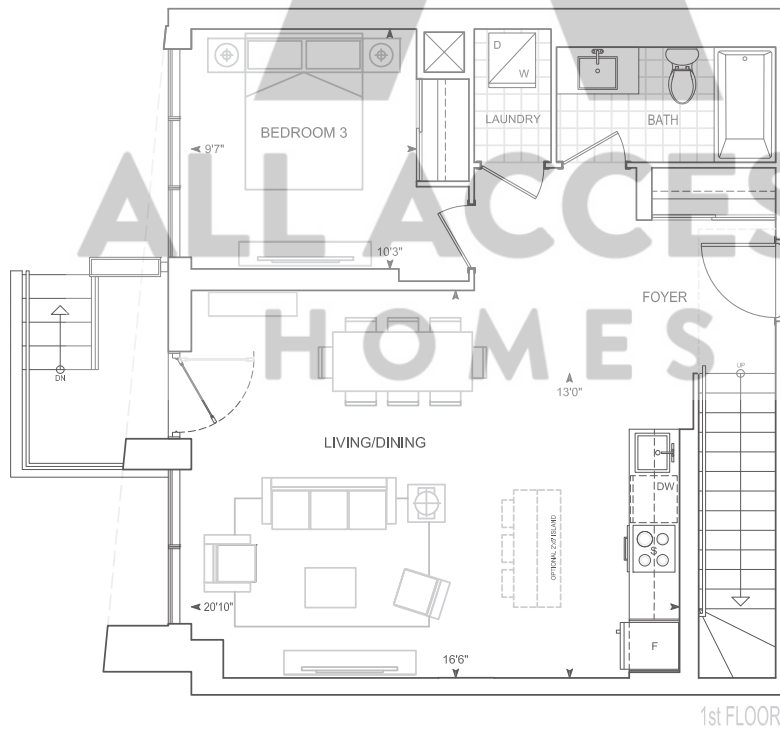
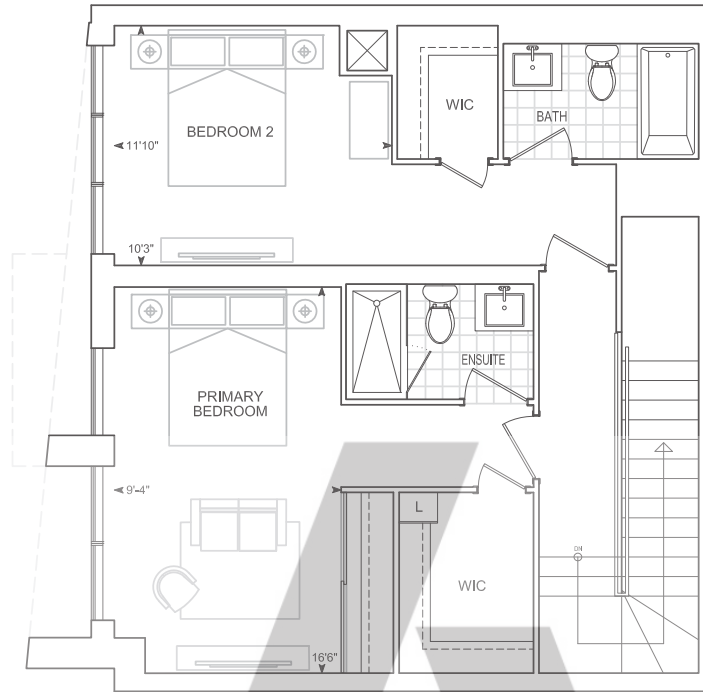
TOWNHOME 10' CEILINGS FLOOR 1
9' CEILINGS FLOOR 2

Dimensions, specifications, layouts, location of materials and fixtures, tile floor patterns and architectural detailing (including window size and location and door size, location and swing) are approximate only and are subject to change or modifications, without notice. Actual usable floor space varies from stated floor area. Orientation of suite may be reverse and Purchaser agrees to accept same. Balconies, terraces and patios are exclusive use common elements shown for display purposes only and location and size are subject to change without notice. All illustrations are artist concept only. The provisions of Schedule "X" of this Agreement, including Section 6 and 38 apply to this Schedule. E. & O.E. May 2023

TH1531

3 BEDROOM

Exterior 23 sq.ft. Interior 1,531 sq.ft. Total 1,554 sq.ft.



TOWNHOME 10' CEILINGS FLOOR 1
9' CEILINGS FLOOR 2

Dimensions, specifications, layouts, location of materials and fixtures, tile floor patterns and architectural detailing (including window size and location and door size, location and swing) are approximate only and are subject to change or modifications, without notice. Actual usable floor space varies from stated floor area. Orientation of suite may be reverse and Purchaser agrees to accept same. Balconies, terraces and patios are exclusive use common elements shown for display purposes only and location and size are subject to change without notice. All illustrations are artist concept only. The provisions of Schedule "X" of this Agreement, including Section 6 and 38 apply to this Schedule. E. & O.E. May 2023

Exterior 23 sq.ft. Interior 1,733 sq.ft. Total 1,756 sq.ft.

TH1733

3 BEDROOM



Dimensions, specifications, layouts, location of materials and fixtures, tile floor patterns and architectural detailing (including window size and location and door size, location and swing) are approximate only and are subject to change or modifications, without notice. Actual usable floor space varies from stated floor area. Orientation of suite may be reverse and Purchaser agrees to accept same. Balconies, terraces and patios are exclusive use common elements shown for display purposes only and location and size are subject to change without notice. All illustrations are artist concept only. The provisions of Schedule "X" of this Agreement, including Section 6 and 38 apply to this Schedule. E. & O.E. May 2023